

Supplementary Material

Reconceptualization of the Erlangen Score for the Assessment of Dementia Risk: The Erlangen Score

Supplementary Table 1. Linear mixed model estimates for the comparison of individual CERAD-NB⁺ subtest z-scores of the ES or ERS groups 1 to 4 compared with ES or ERS group 0 as reference

Outcome variable	Group	Score		<i>Estimate</i>	<i>p</i>	<i>95% CI</i>	
MMSE	1	ES	ΔBaseline	-0.19	0.78	-1.52	1.14
			ΔSlope	0.06	0.73	-0.27	0.38
		ERS	ΔBaseline	-0.19	0.48	-0.73	0.35
			ΔSlope	0.11	0.18	-0.05	0.27
	2	ES	ΔBaseline	-0.22	0.40	-0.75	0.30
			ΔSlope	0.05	0.58	-0.13	0.23
		ERS	ΔBaseline	-0.56	0.46	-2.06	0.94
			ΔSlope	-1.07	<0.001	-1.56	-0.58
	3	ES	ΔBaseline	-0.13	0.76	-0.96	0.70
			ΔSlope	-0.33	0.03	-0.62	-0.04
		ERS	ΔBaseline	-0.42	0.08	-0.89	0.05
			ΔSlope	-0.34	<0.001	-0.48	-0.19
	4	ES	ΔBaseline	-0.63	0.01	-1.07	-0.19
			ΔSlope	-0.43	<0.001	-0.59	-0.26
		ERS	ΔBaseline	-0.71	0.02	-1.29	-0.12
			ΔSlope	-0.56	<0.001	-0.80	-0.32
Word List Memory	1	ES	ΔBaseline	0.75	0.41	-1.06	2.55
			ΔSlope	0.04	0.78	-0.27	0.35
		ERS	ΔBaseline	-0.05	0.89	-0.75	0.65
			ΔSlope	0.05	0.60	-0.12	0.21
	2	ES	ΔBaseline	0.15	0.66	-0.54	0.84
			ΔSlope	-0.02	0.81	-0.21	0.16
		ERS	ΔBaseline	-0.41	0.69	-2.43	1.61
			ΔSlope	-0.91	0.01	-1.58	-0.24
	3	ES	ΔBaseline	-0.67	0.22	-1.73	0.39
			ΔSlope	-0.22	0.19	-0.56	0.11
		ERS	ΔBaseline	-0.90	<0.001	-1.49	-0.32
			ΔSlope	-0.18	0.06	-0.37	0.01
	4	ES	ΔBaseline	-1.00	<0.001	-1.59	-0.42
			ΔSlope	-0.22	0.03	-0.41	-0.02
		ERS	ΔBaseline	-1.20	<0.001	-1.98	-0.41
			ΔSlope	-0.33	0.02	-0.61	-0.04

Word List DR	1	ES	Δ Baseline	0.41	0.67	-1.53	2.35
			Δ Slope ^e	0.09	0.46	-0.16	0.35
	ERS	Δ Baseline	-0.06	0.85	-0.69	0.57	
		Δ Slope ^e	-0.02	0.75	-0.14	0.10	
	2	ES	Δ Baseline	-0.02	0.94	-0.64	0.59
			Δ Slope ^e	-0.04	0.53	-0.16	0.08
	ERS	Δ Baseline	-0.95	0.34	-2.91	1.01	
		Δ Slope ^e	-0.43	0.22	-1.17	0.31	
	3	ES	Δ Baseline	-0.76	0.13	-1.74	0.23
			Δ Slope ^e	-0.10	0.36	-0.32	0.12
	ERS	Δ Baseline	-1.00	<0.001	-1.56	-0.44	
		Δ Slope	-0.07	0.40	-0.23	0.10	
4	ES	Δ Baseline	-0.99	<0.001	-1.54	-0.44	
		Δ Slope	-0.11	0.12	-0.26	0.03	
ERS	Δ Baseline	-0.79	0.04	-1.53	-0.05		
	Δ Slope ^e	-0.32	<0.001	-0.53	-0.11		
Constructional Praxis DR	1	ES	Δ Baseline	0.23	0.80	-1.59	2.06
			Δ Slope ^e	0.12	0.35	-0.13	0.36
	ERS	Δ Baseline	-0.50	0.19	-1.25	0.25	
		Δ Slope ^e	0.07	0.32	-0.06	0.20	
	2	ES	Δ Baseline	-0.33	0.36	-1.04	0.38
			Δ Slope ^e	0.03	0.69	-0.10	0.15
	ERS	Δ Baseline	-0.50	0.71	-3.20	2.21	
		Δ Slope ^e	-0.70	0.04	-1.37	-0.02	
	3	ES	Δ Baseline	-0.07	0.89	-1.15	1.01
			Δ Slope ^e	-0.30	0.01	-0.52	-0.08
	ERS	Δ Baseline	-0.55	0.09	-1.18	0.09	
		Δ Slope ^e	-0.22	<0.001	-0.34	-0.11	
4	ES	Δ Baseline	-0.79	0.02	-1.44	0.15	
		Δ Slope ^e	-0.21	<0.001	-0.33	-0.08	
ERS	Δ Baseline ^d	-1.02	0.03	-1.92	-0.11		
	Δ Slope ^e	-0.26	0.01	-0.47	-0.06		
Phonematic verbal fluency	1	ES	Δ Baseline	-0.50	0.46	-1.84	0.84
			Δ Slope ^e	0.06	0.52	-0.13	0.26
	ERS	Δ Baseline	0.28	0.36	-0.31	0.86	
		Δ Slope ^e	-0.06	0.24	-0.16	0.04	
	2	ES	Δ Baseline	0.11	0.71	-0.48	0.70
			Δ Slope ^e	-0.07	0.21	-0.17	0.04
	ERS	Δ Baseline	-0.82	0.36	-2.60	0.96	
		Δ Slope ^e	-0.34	0.15	-0.83	0.14	
	3	ES	Δ Baseline	-0.12	0.79	-0.96	0.73
			Δ Slope ^e	-0.15	0.11	-0.33	0.03
ERS	Δ Baseline	-0.13	0.62	-0.65	0.38		

4	ES	ΔSlope^e	-0.18	0.01	-0.30	-0.05	
		ΔBaseline	-0.12	0.64	-0.61	0.37	
	ERS	ΔSlope^e	-0.19	0.01	-0.33	-0.06	
		ΔBaseline	-0.12	0.72	-0.77	0.53	
			ΔSlope ^e	-0.21	0.07	-0.44	0.02

^a The Consortium to Establish a Registry for Alzheimer's Disease (CERAD) neuropsychological battery plus (NB+)

MMSE, Mini-Mental State Examination; DR, Delayed Recall; ΔBaseline, Difference at baseline compared to ES 0 (ERS 0); ΔSlope, Difference in longitudinal slope compared to ES 0 (ERS 0)

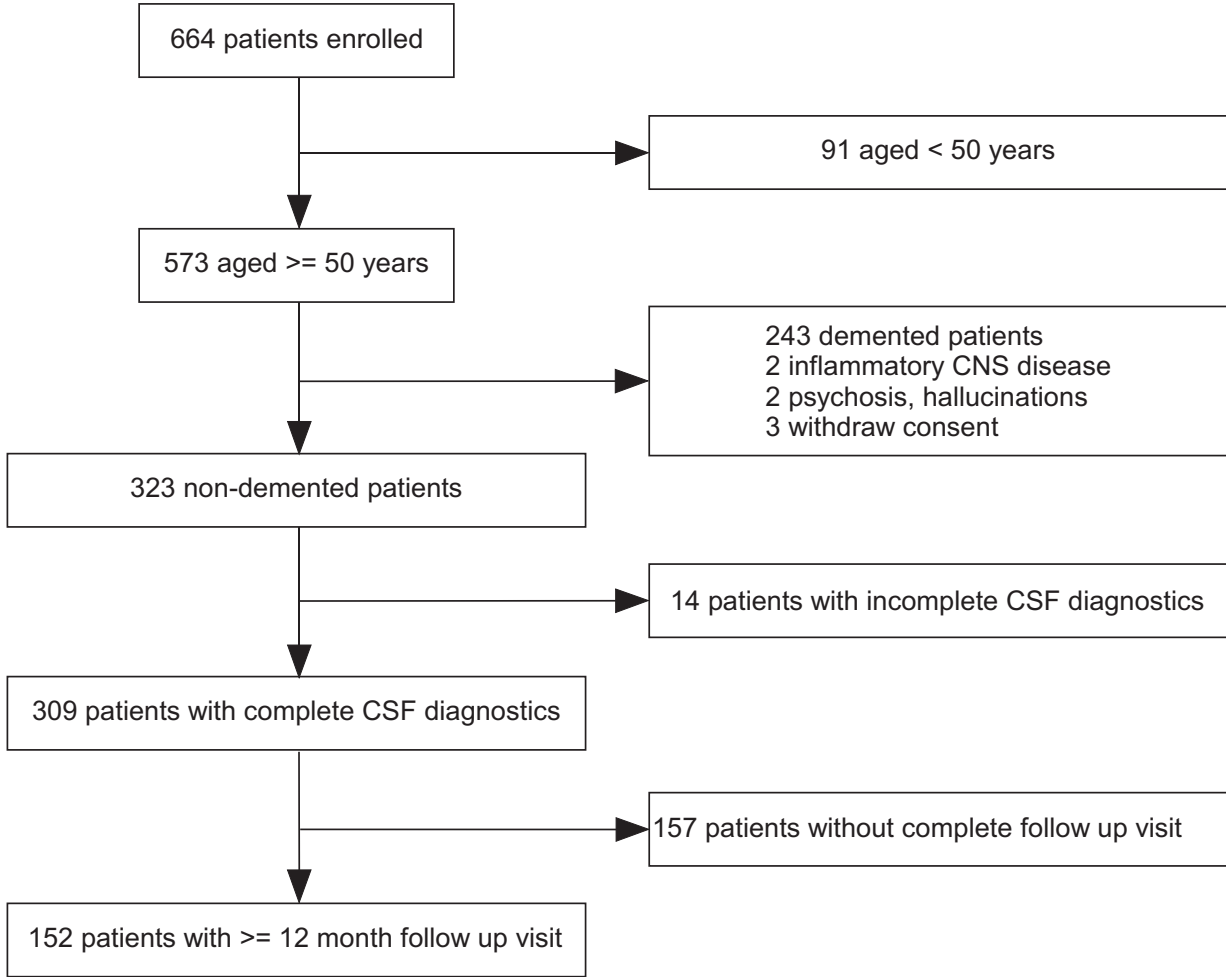
Supplementary Table 2. Linear mixed model estimates for the comparison of individual CERAD-NB⁺ subtest z-scores between the groups 1 to 4 of the ES without considering the A β ₄₂/A β ₄₀ ratio (w/o R) compared with group 0 as reference

Outcome variable			<i>Estimate</i>	<i>p</i>	<i>95% CI</i>		
MMSE	ES w/o R 1	Δ Baseline	-0.43	0.36	-1.36	0.49	
		Δ Slope	-0.16	0.29	-0.47	0.14	
	ES w/o R 2	Δ Baseline	-0.34	0.12	-0.76	0.09	
		Δ Slope	-0.14	0.09	-0.30	0.02	
	ES w/o R 3	Δ Baseline	-0.73	0.12	-1.64	0.18	
		Δ Slope	-0.35	0.12	-0.79	0.10	
	ES w/o R 4	Δ Baseline	-0.69	0.06	-1.41	0.04	
		Δ Slope	-0.83	<0.001	-1.19	-0.46	
	Word List Memory	ES w/o R 1	Δ Baseline	0.55	0.41	-0.75	1.84
			Δ Slope	-0.18	0.27	-0.51	0.14
ES w/o R 2		Δ Baseline	-0.46	0.11	-1.02	0.10	
		Δ Slope	-0.09	0.34	-0.26	0.09	
ES w/o R 3		Δ Baseline	-1.76	0.02	-3.24	-0.29	
		Δ Slope	0.02	0.95	-0.52	0.55	
ES w/o R 4		Δ Baseline	-0.82	0.12	-1.85	0.21	
		Δ Slope	-0.58	0.01	-1.01	-0.15	
Word List DR		ES w/o R 1	Δ Baseline	0.10	0.89	-1.37	1.57
			Δ Slope	-0.04	0.77	-0.32	0.24
	ES w/o R 2	Δ Baseline	-0.57	0.03	-1.08	-0.06	
		Δ Slope	-0.04	0.50	-0.16	0.08	
	ES w/o R 3	Δ Baseline	-1.02	0.11	-2.27	0.22	
		Δ Slope	-0.31	0.10	-0.68	0.06	
	ES w/o R 4	Δ Baseline	-0.62	0.20	-1.58	0.33	
		Δ Slope	-0.34	0.02	-0.61	-0.07	
	Constructional Praxis DR	ES w/o R 1	Δ Baseline	0.27	0.74	-1.24	1.78
			Δ Slope	-0.05	0.14	-0.34	0.23
ES w/o R 2		Δ Baseline	-0.49	0.28	-1.05	0.07	
		Δ Slope	-0.07	0.06	-0.18	0.05	
ES w/o R 3		Δ Baseline	-0.99	0.67	-2.33	0.34	
		Δ Slope	-0.23	0.18	-0.58	0.11	
ES w/o R 4		Δ Baseline	-0.99	0.52	-2.02	0.03	
		Δ Slope	-0.29	0.16	-0.60	0.02	
Phonematic verbal fluency		ES w/o R 1	Δ Baseline	-0.43	0.41	-1.47	0.61
			Δ Slope	-0.02	0.88	-0.20	0.17
	ES w/o R 2	Δ Baseline	0.04	0.59	-0.46	0.53	
		Δ Slope	-0.12	0.69	-0.23	-0.01	
	ES w/o R 3	Δ Baseline	-0.33	0.85	-1.56	0.91	
		Δ Slope	-0.04	0.03	-0.50	0.41	
	ES w/o R 4	Δ Baseline	-0.16	0.84	-0.96	0.64	
		Δ Slope	-0.31	<0.001	-0.53	-0.10	

^a The Consortium to Establish a Registry for Alzheimer's Disease (CERAD) neuropsychological battery plus (NB+)

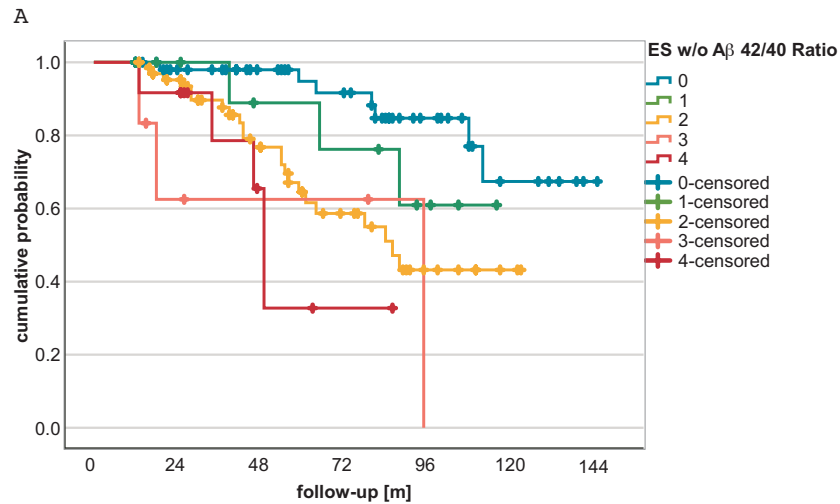
R, $A\beta_{42}/A\beta_{40}$ ratio; MMSE, Mini-Mental State Examination; DR, Delayed Recall; Δ Baseline, Difference at baseline compared to ES w/o R 0; Δ Slope, Difference in longitudinal slope compared to ES w/o R 0

Supplementary Figure 1. Study population flow chart



CNS, central nervous system; CSF, cerebrospinal fluid

Supplementary Figure 2. Comparison of dementia risk between the Erlangen Score groups without the $A\beta_{42}/A\beta_{40}$ ratio. Kaplan-Meier curves show the risk of dementia onset in nondemented individuals (A) for the different ES groups when the $A\beta_{42}/A\beta_{40}$ ratio is not accounted. Nondemented individuals with an ES of 2 or higher showed an increased risk of dementia onset compared with controls. The hazard ratios of groups 2 and 3 in univariate and a multivariate Cox regression model with age, education, and MMSE at baseline as covariates were also found to be significantly increased in comparison with the control group.



ES	number entering interval/(withdrawing) [months]						
	0	24	48	72	96	120	144
0	55 (9)	45 (10)	35 (4)	29 (12)	15 (7)	6 (5)	1 (1)
1	12 (2)	10 (2)	7 (0)	6 (2)	3 (3)		
2	66 (8)	55 (12)	34 (9)	18 (7)	7 (5)	2 (2)	
3	6 (1)	3 (1)	2 (0)	2 (1)			
4	12 (0)	11 (5)	4 (1)	1 (1)			
	151 (20)	124 (30)	82 (14)	56 (23)	25 (15)	8 (7)	1 (1)

