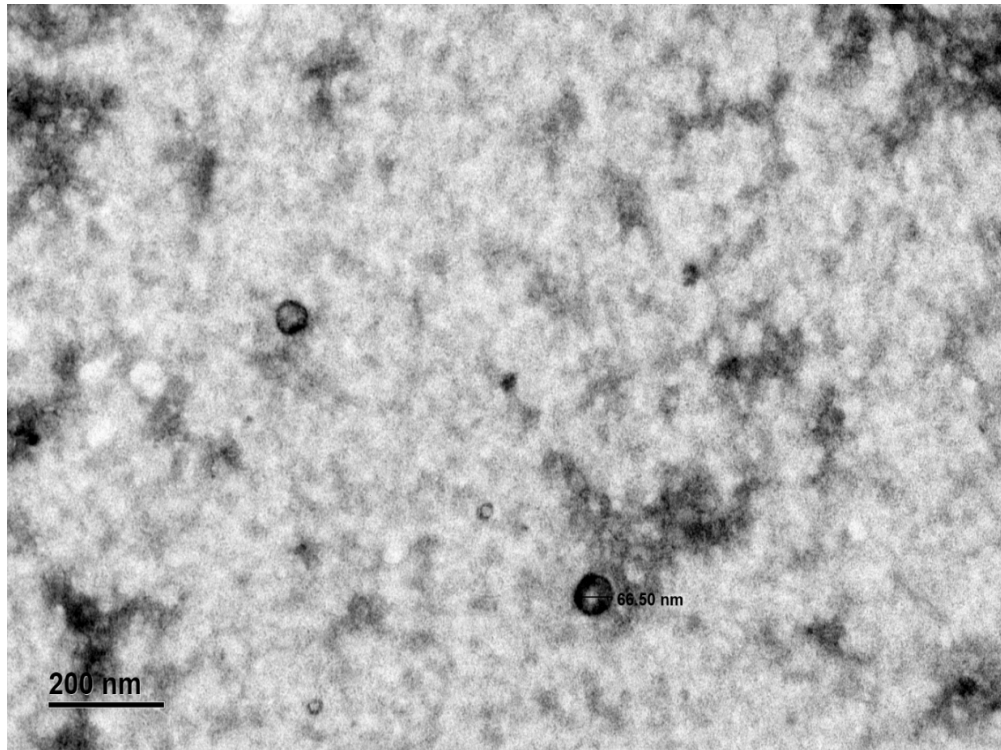


Supplementary Material

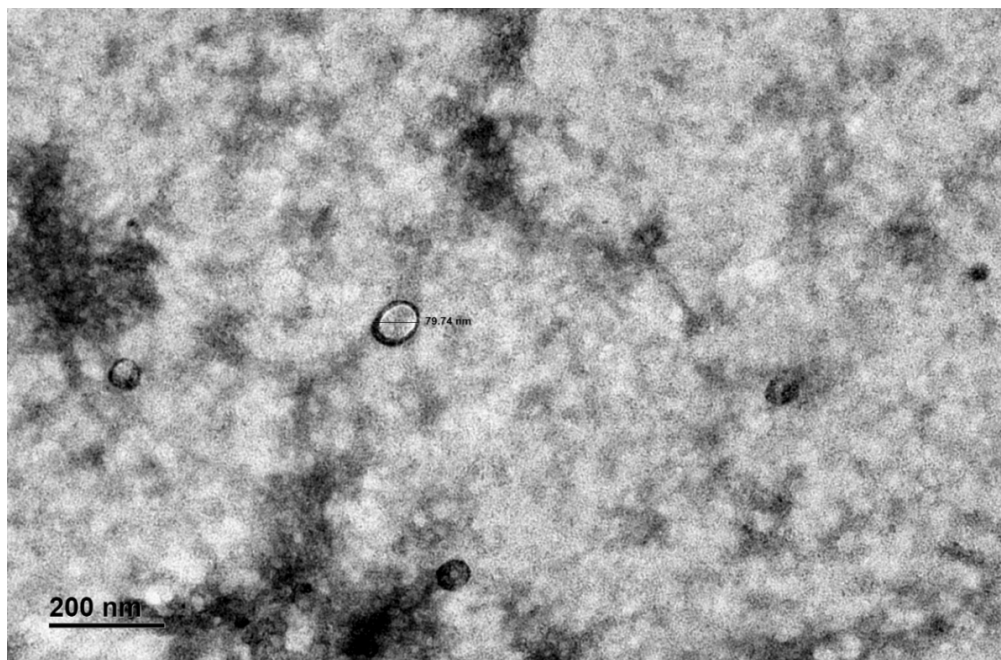
Pathological (Dis)Similarities in Neuronal Exosome-Derived Synaptic and Organellar Marker Levels Between Alzheimer's Disease and Frontotemporal Dementia

Supplementary Figure 1. TEM images of exosomes fractionated from plasma samples. Data represent the exosomes of two independent samples from HC, AD, and FTD groups; (A) HC 1; (B) HC 2; (C) AD 1; (D) AD 2; (E) FTD 1; (F) FTD 2. Scale bar = 200 nm, Magnification = x15000.

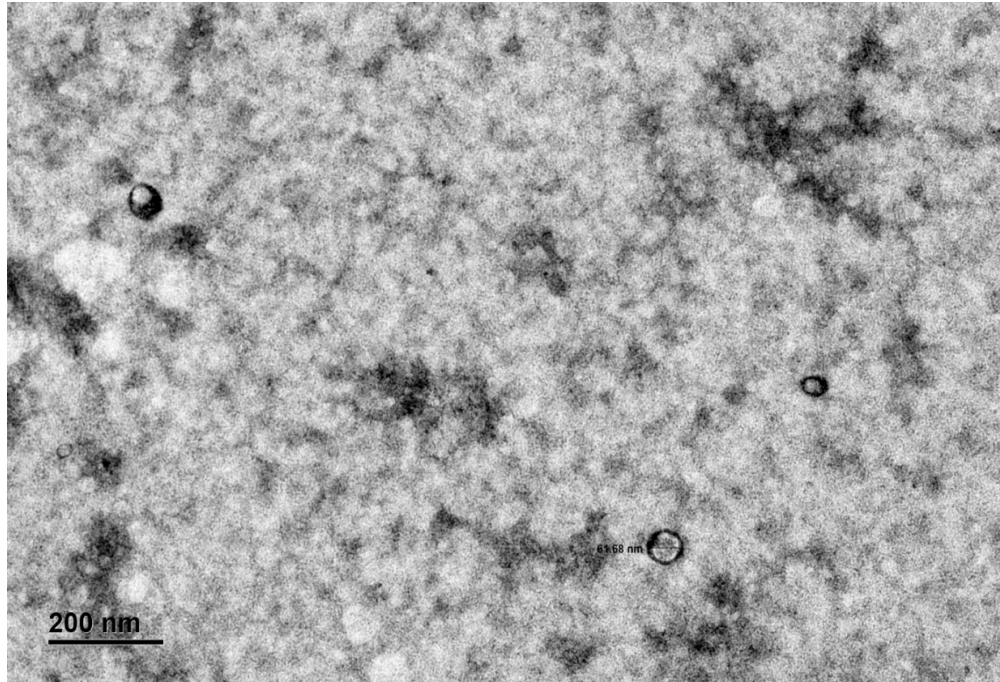
A



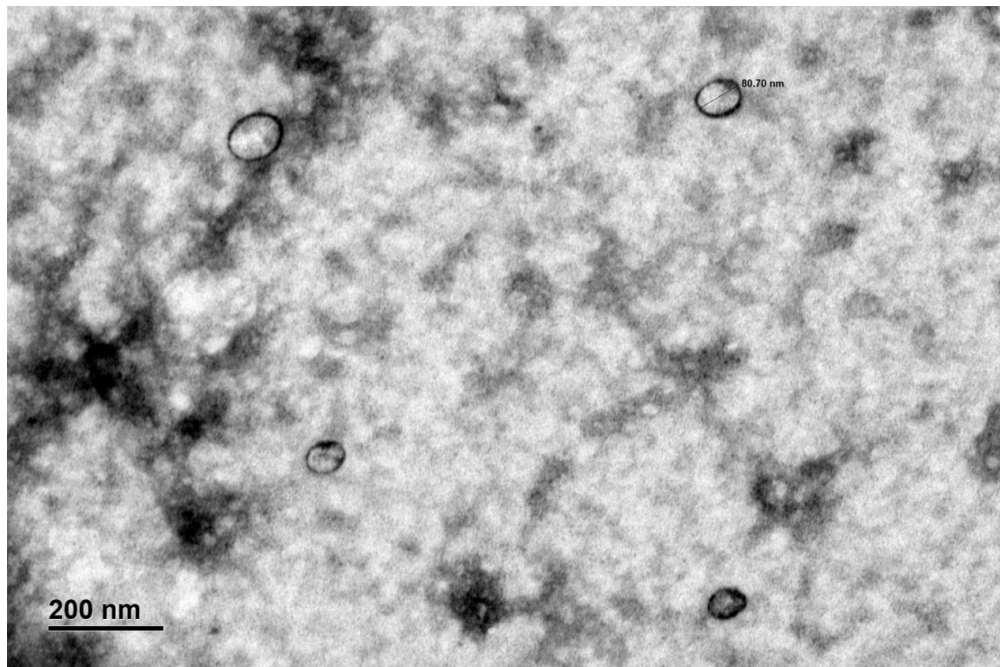
B



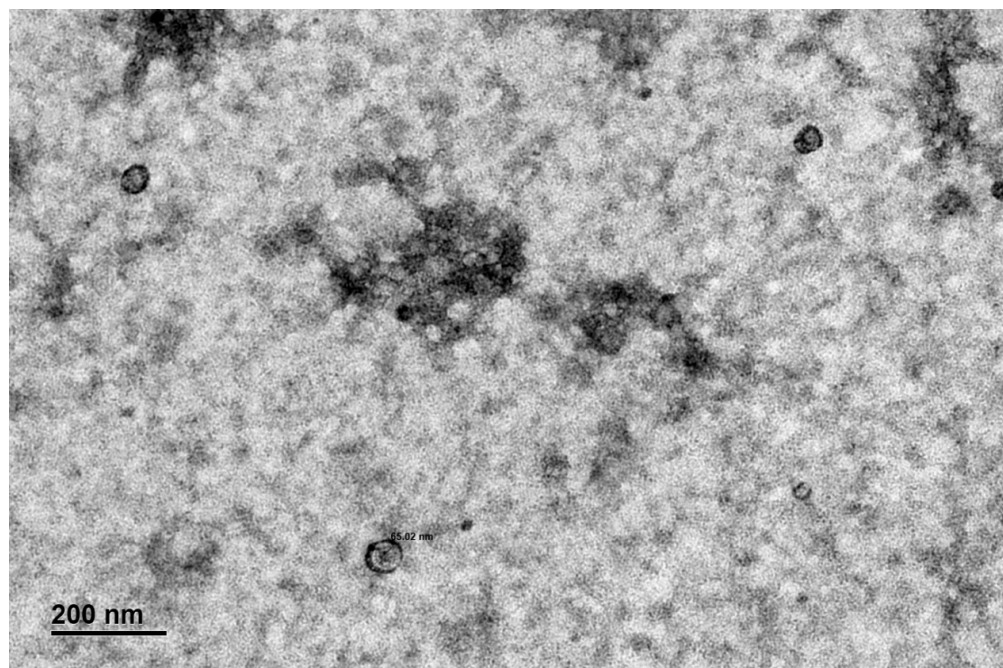
C



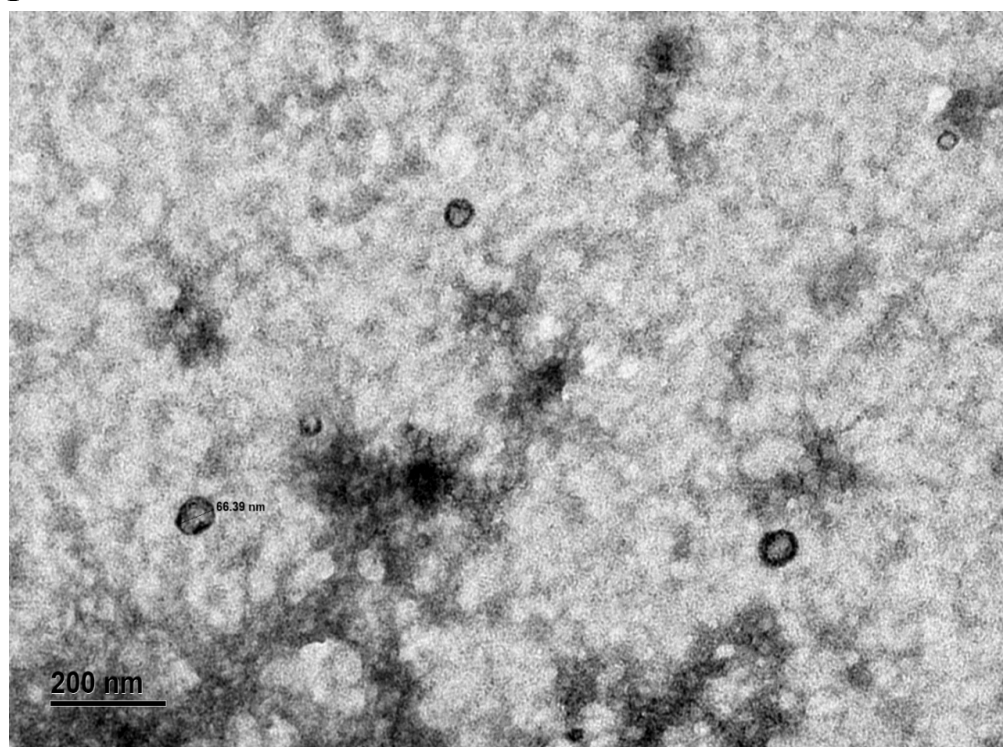
D



E



F



Supplementary Figure 2. Immunoblotting of exosomal proteins with antibodies to (A) LAMP-2, (B) Neurogranin, (C) L1 CAM, (D) MFN-2 and (E) Golgin A4. Exosomal extracts were separated on 10% SDS-polyacrylamide gels for western blotting with LICAM, Neurogranin, MFN-2 and LAMP-2 antibodies. Exosomal extracts were separated on 6% SDS-polyacrylamide gels for western blotting with golgin A4 antibodies. Lanes 1, 2, and 3 correspond to HC, AD and FTD groups respectively. (The unnumbered lanes were not considered for the present study.)

