

Could country-level factors explain sex differences in dementia incidence and prevalence? A systematic review and meta-analysis

Hamidul Huque, Ranmalee Eramudugolla, Benjamin Chidiac, Nicole Ee, Lauren Ehrenfeld, Fiona E. Matthews, Ruth Peters, Kaarin J. Anstey

TABLE OF CONTENTS

Supplementary Figure 1. Country specific incidence Any dementia/1000 PY for men and women at age (a) 60-64 (b) 65-69 (c) 70-74 (d) 75-79 (e) 80-84 (f) 85-89 and (g) 90 and over3

Supplementary Figure 2. Country specific incidence of AD/1000 PY for men and women at age (a) 60-64 (b) 65-69 (c) 70-74 (d) 75-79 (e) 80-84 (f) 85-89 and (g) 90 and over4

Supplementary Figure 3. Country specific incidence of VaD/1000 PY for men and women at age (a) 60-64 (b) 65-69 (c) 70-74 (d) 75-79 (e) 80-84 (f) 85-89 and (g) 90 and over5

Supplementary Figure 4. Country specific prevalence of Any dementia/1000 people for men and women at age (a) 60-64 (b) 65-69 (c) 70-74 (d) 75-79 (e) 80-84 (f) 85-89 and (g) 90 and over.....6

Supplementary Figure 5. Country specific prevalence of AD/1000 people for men and women at age (a) 60-64 (b) 65-69 (c) 70-74 (d) 75-79 (e) 80-84 (f) 85-89 and (g) 90 and over7

Supplementary Figure 6. Country specific prevalence of VaD/1000 people for men and women at age (a) 65-69 (b) 70-74 (c) 75-79 (d) 80-84 (e) 85-89 and (f) 90 and over8

Supplementary Figure 7. Country specific prevalence of Any dementia/1000 people for men and women among (i) 65 and over and (ii) 75 and older9

Supplementary Figure 8. Country specific prevalence of AD/1000 people for men and women among (i) 65 and over and (ii) 75 and older.....10

Supplementary Figure 9. Country specific prevalence of VaD/1000 people for men and women among (i) 65 and over and (ii) 75 and older.....11

Supplementary Table 1. Hierarchical meta regression analysis to find the 2016 country specific risk factors (mediators) associated with age specific dementia incidence/prevalence (all models are adjusted for age)12

Supplementary Figure 10. Funnel plot for country specific prevalence of Any dementia for men and women at age (a) 60-64 (b) 65-69 (c) 70-74 (d) 75-79 (e) 80-84 and (f) 85-89 ...13

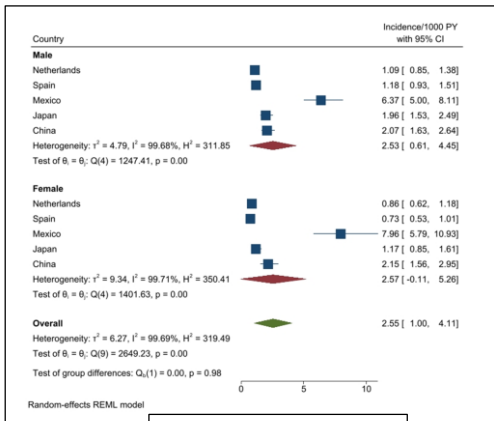
Supplementary Figure 11. Funnel plot for country specific prevalence of AD for men and women at age (a) 60-64 (b) 65-69 (c) 70-74 (d) 75-79 (e) 80-84 and (f) 85-89.....13

Supplementary Figure 12. Funnel plot for country specific prevalence of VaD for men and women at age (a) 65-69 (b) 70-74 (c) 75-79 (d) 80-84 (e) 85-89 and (f) 90+13

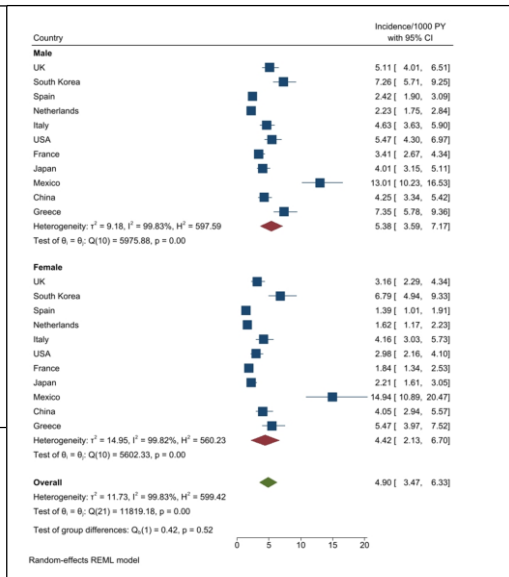
Supplementary Figure 13. Funnel plot for country specific incidence of Any dementia for men and women at age (a) 60-64 (b) 65-69 (c) 70-74 (d) 75-79 (e) 80-84 and (f) 85-89 ...13

Supplementary Figure 14. Funnel plot for country specific incidence of AD for men and women at age (a) 60-64 (b) 65-69 (c) 70-74 (d) 75-79 (e) 80-84 and (f) 85-89..... 13

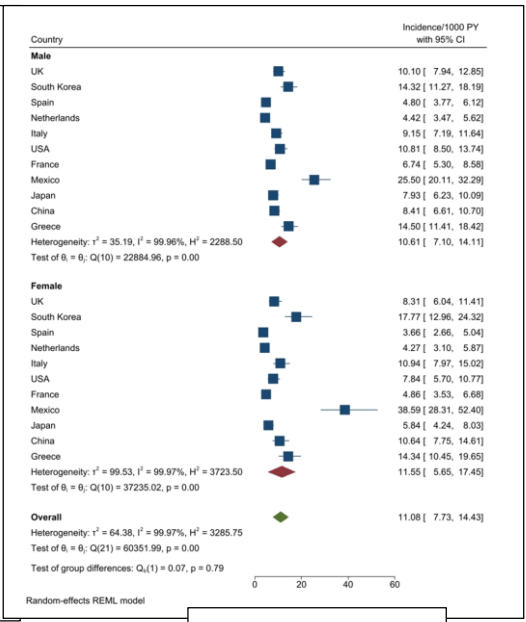
Supplementary Figure 15. Funnel plot for country specific incidence of VaD for men and women at age (a) 60-64 (b) 65-69 (c) 70-74 (d) 75-79 (e) 80-84 and (f) 85-89..... 13



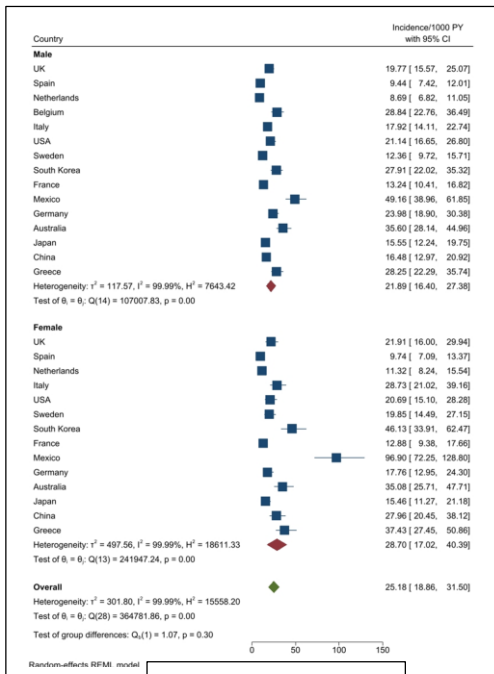
(a) 60-64



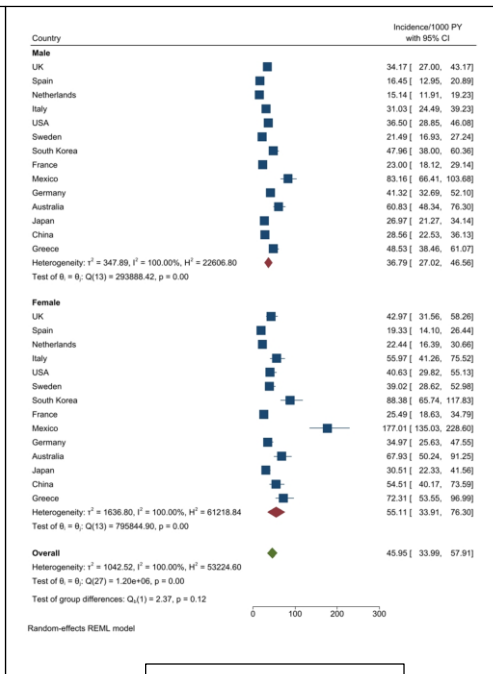
(b) 65-69



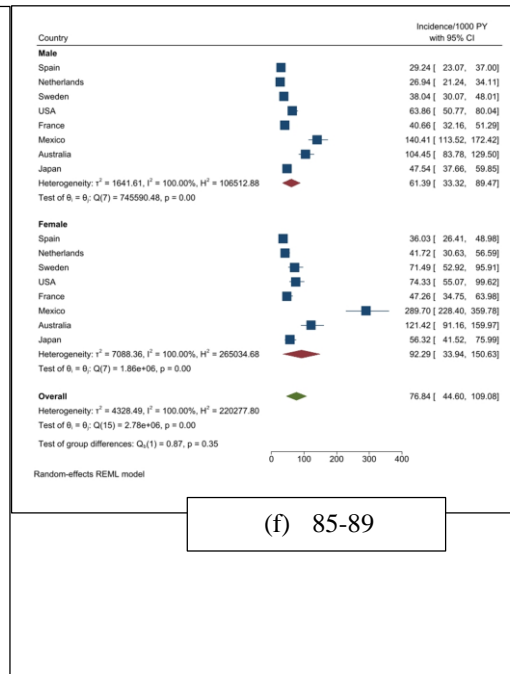
(c) 70-74



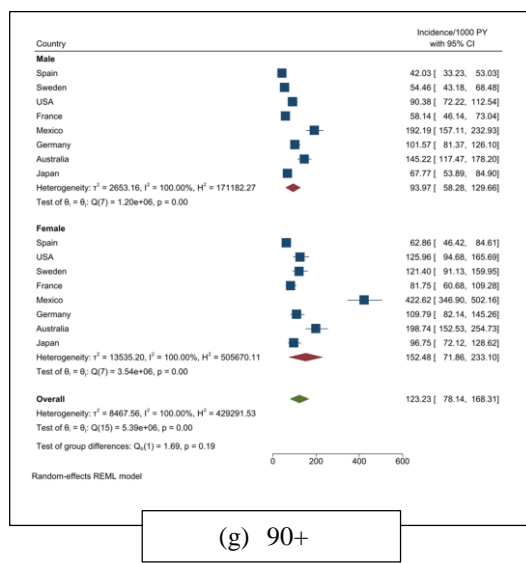
(d) 75-79



(e) 80-84

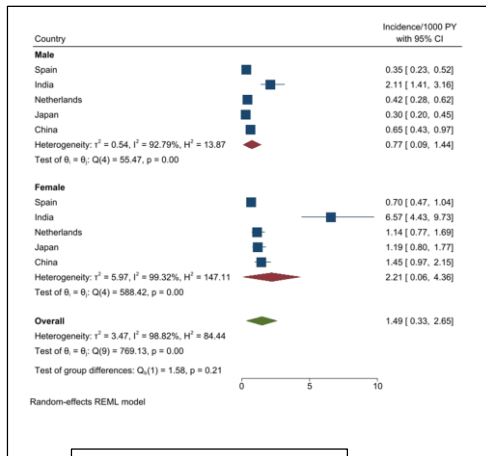


(f) 85-89

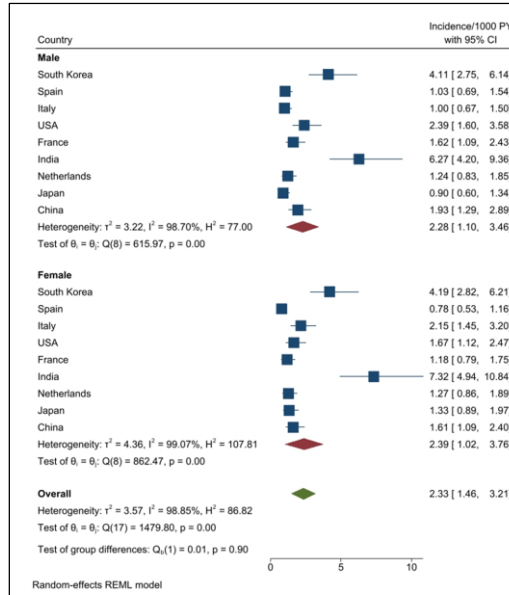


(g) 90+

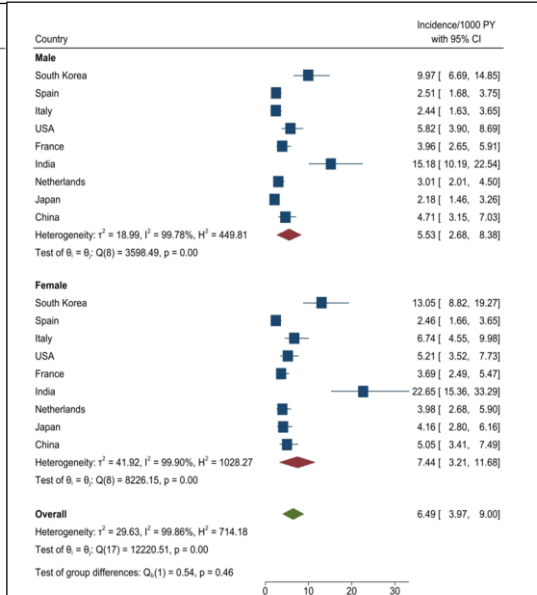
Supplementary Figure 1. Country specific incidence Any dementia/1000 PY for men and women at age (a) 60-64 (b) 65-69 (c) 70-74 (d) 75-79 (e) 80-84 (f) 85-89 and (g) 90 and over



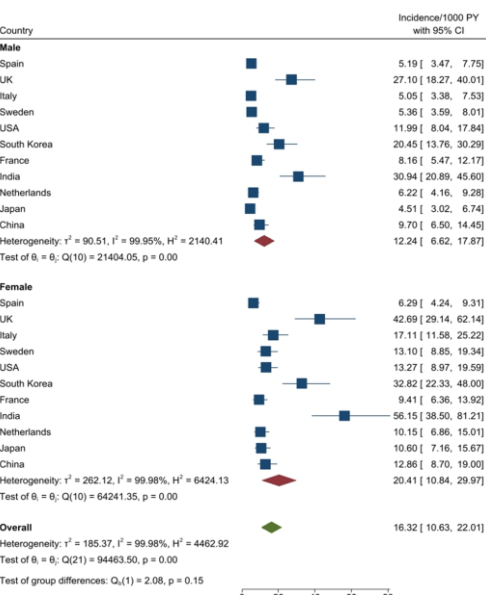
(a) 60-64



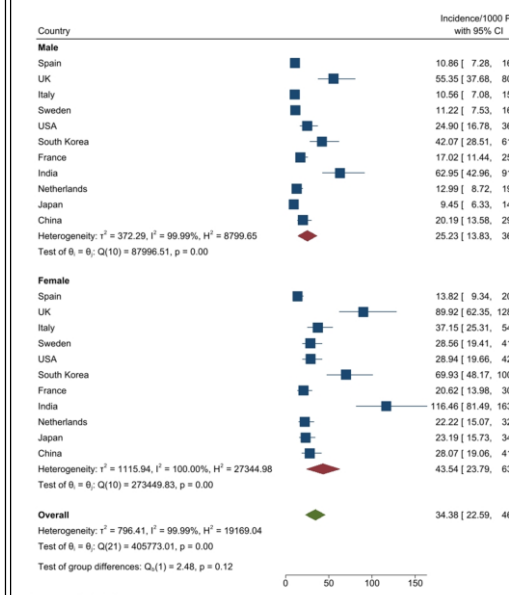
(b) 65-69



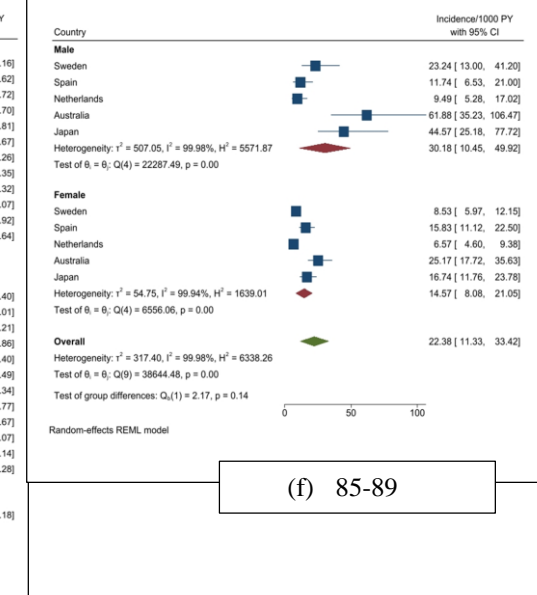
(c) 70-74



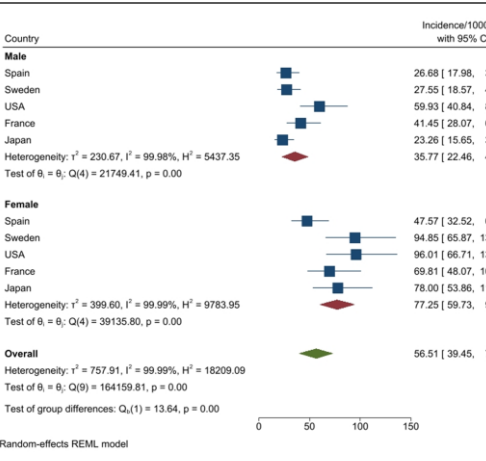
(d) 75-79



(e) 80-84

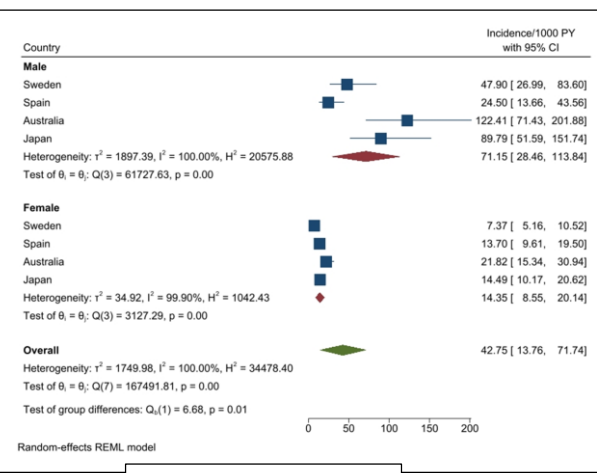
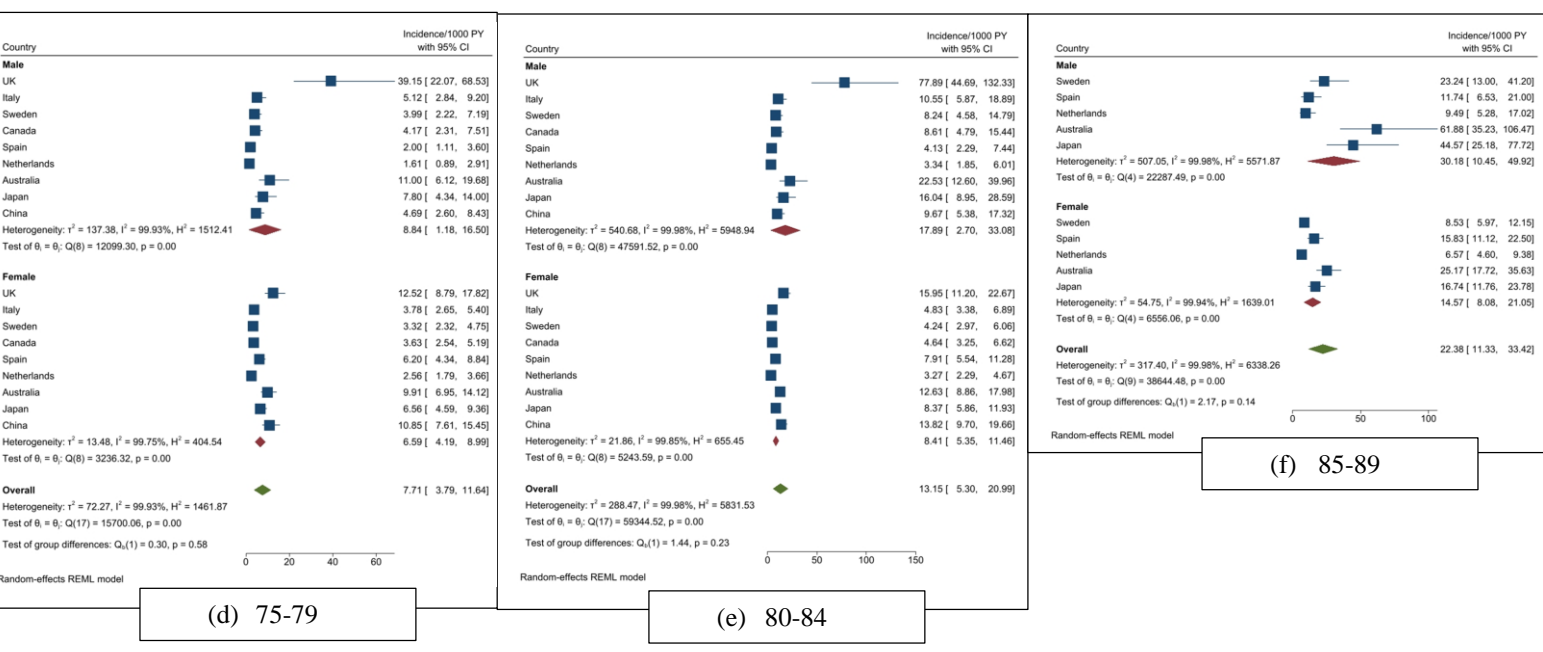
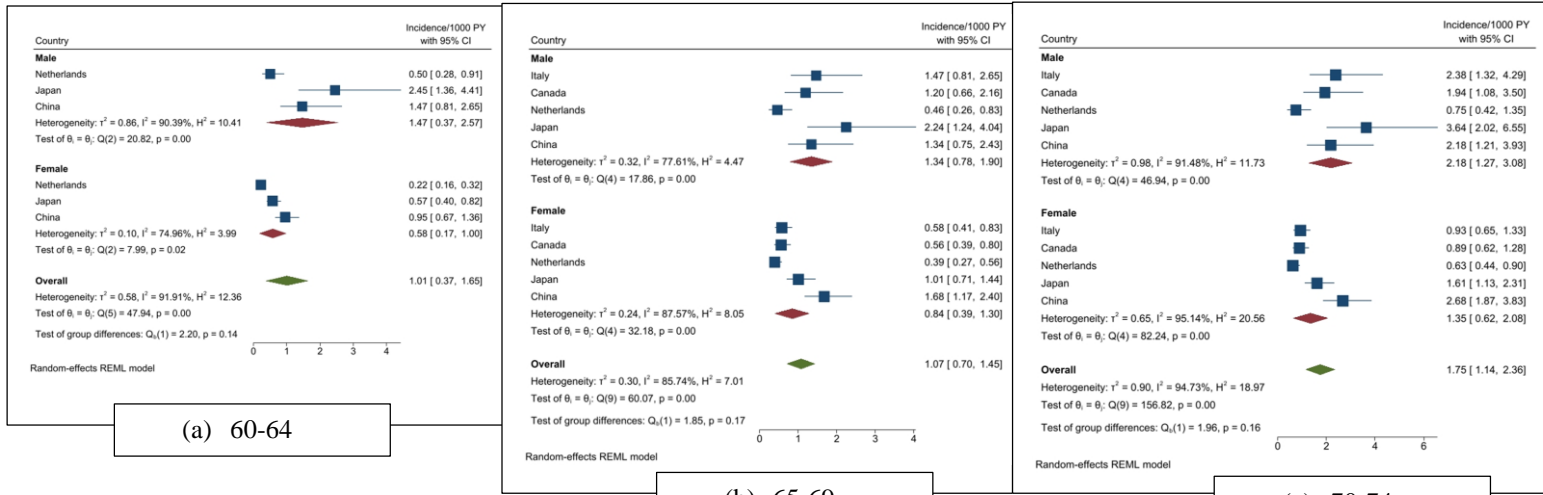


(f) 85-89

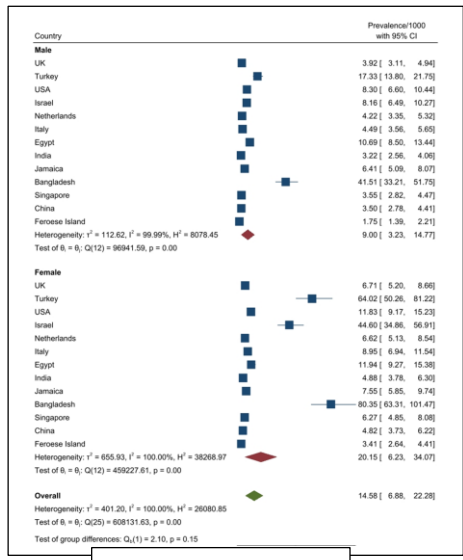


(g) 90+

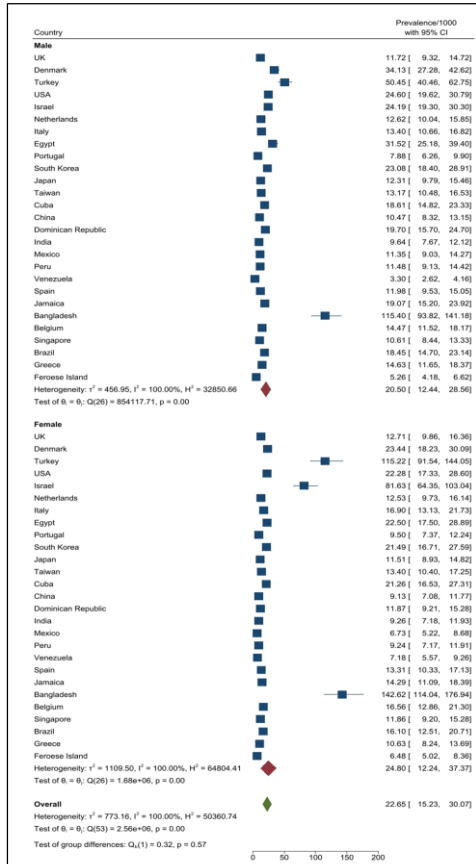
Supplementary Figure 2. Country specific incidence of AD/1000 PY for men and women at age (a) 60-64 (b) 65-69 (c) 70-74 (d) 75-79 (e) 80-84 (f) 85-89 and (g) 90 and over



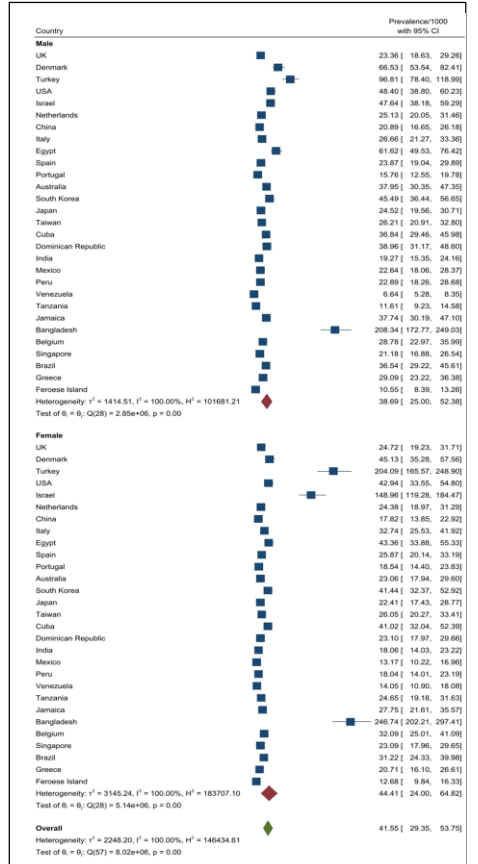
Supplementary Figure 3. Country specific incidence of VaD/1000 PY for men and women at age (a) 60-64 (b) 65-69 (c) 70-74 (d) 75-79 (e) 80-84 (f) 85-89 and (g) 90 and over



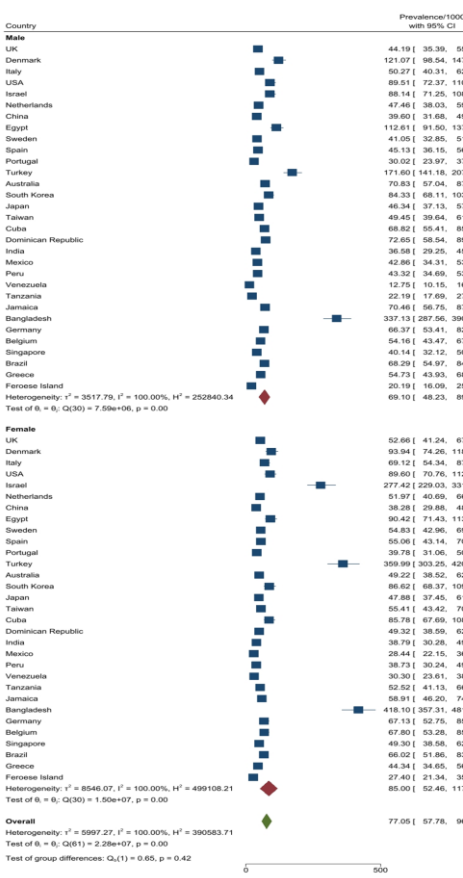
(a) 60-64



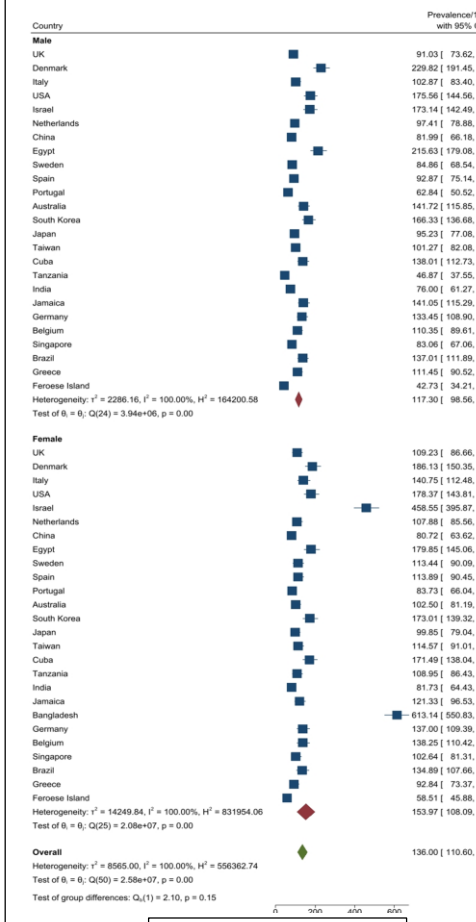
(b) 65-69



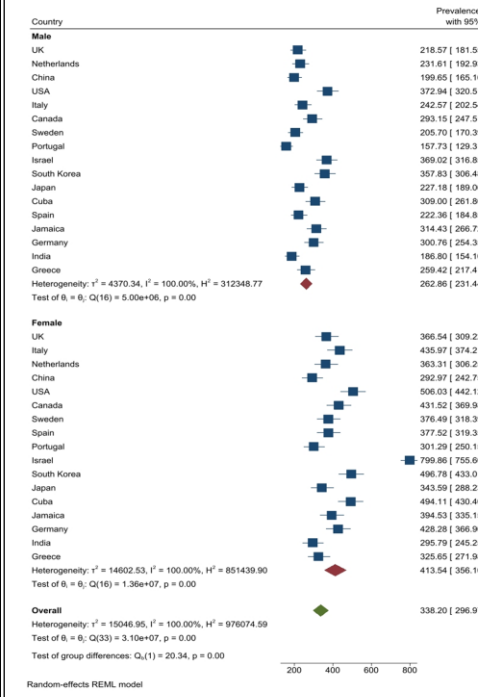
(c) 70-74

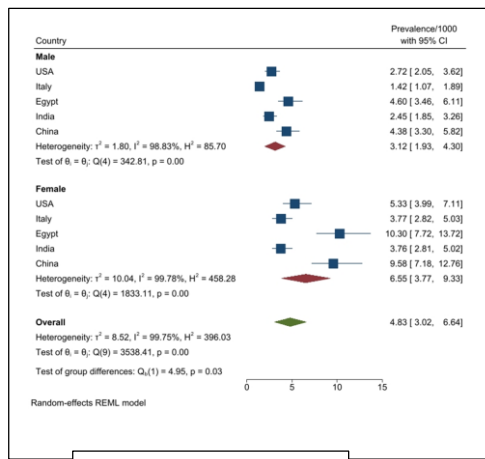


(d) 75-79

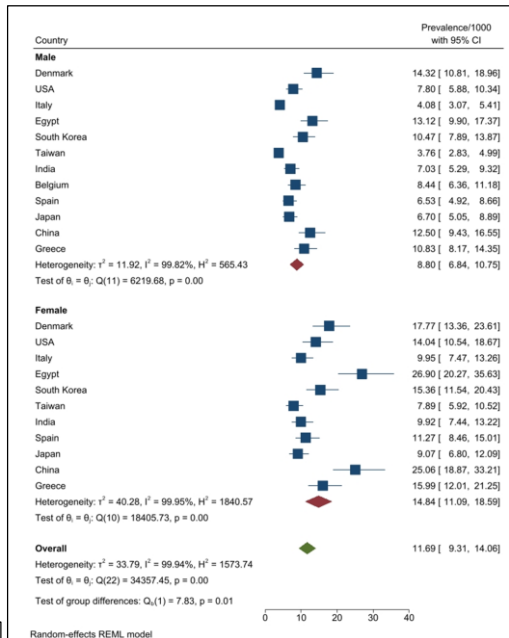


(e) 80-84

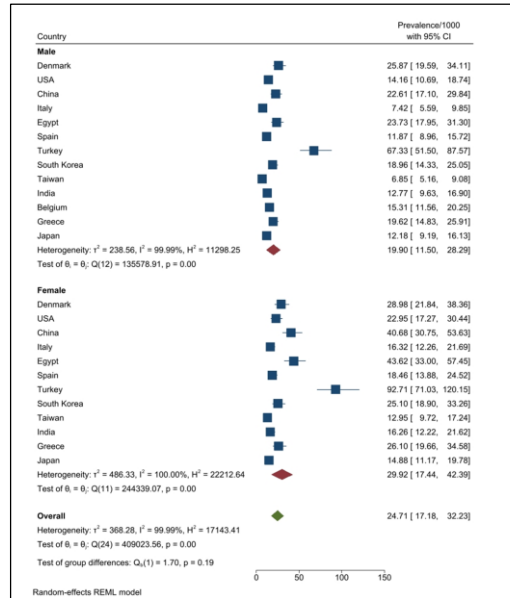




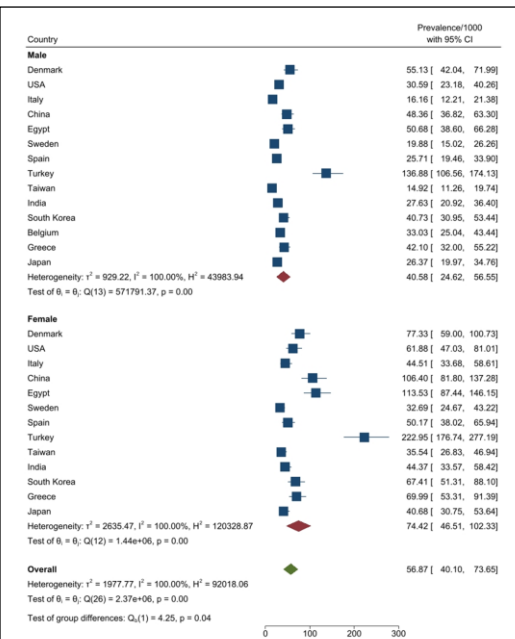
(a) 60-64



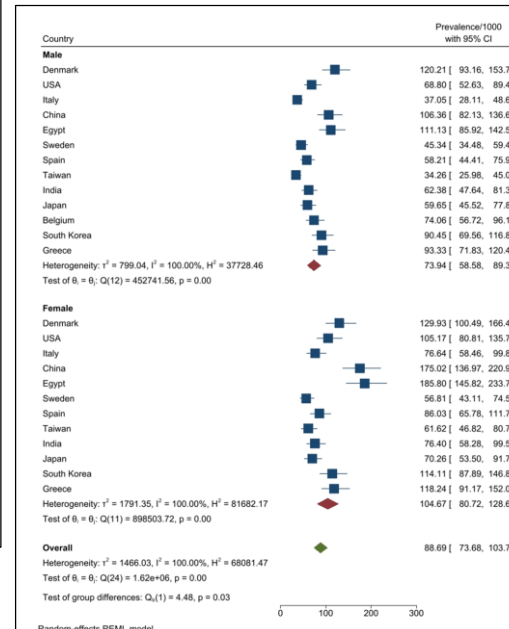
(b) 65-69



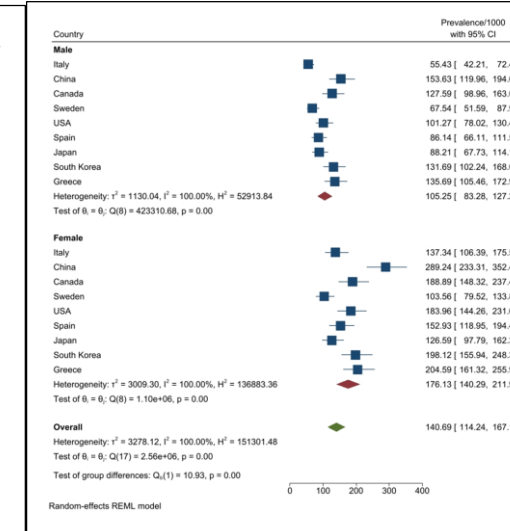
(c) 70-74



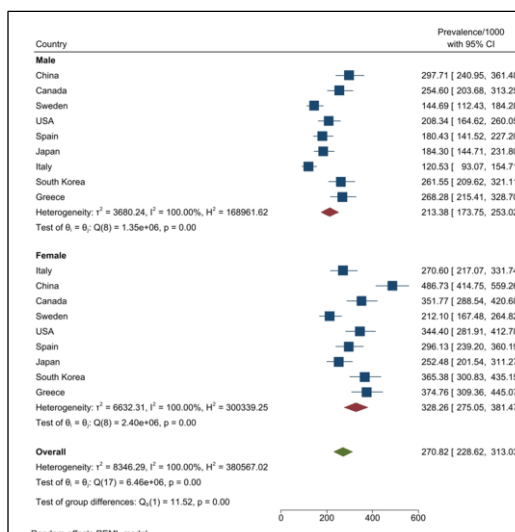
(d) 75-79



(e) 80-84

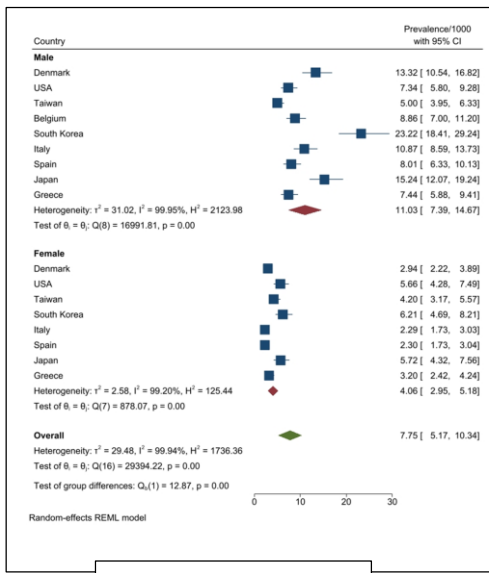


(f) 85-89

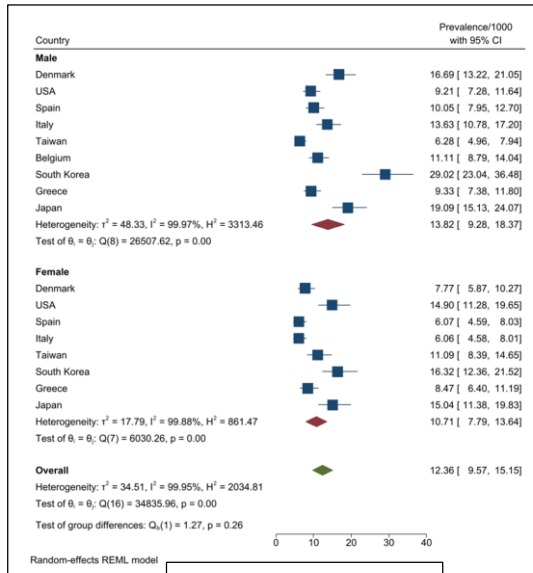


(g) 90+

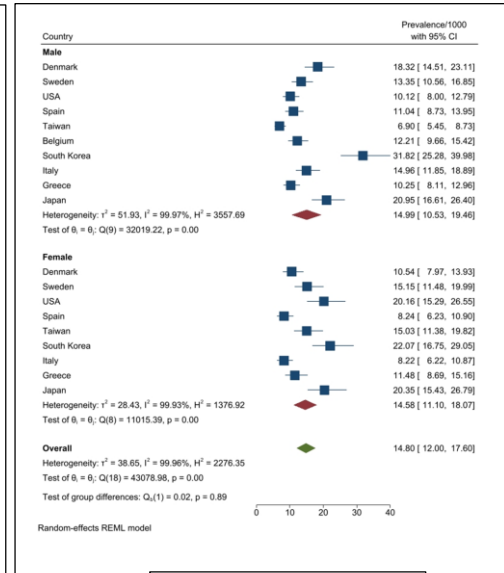
Supplementary Figure 5. Country specific prevalence of AD/1000 people for men and women at age (a) 60-64 (b) 65-69 (c) 70-74 (d) 75-79 (e) 80-84 (f) 85-89 and (g) 90 and over



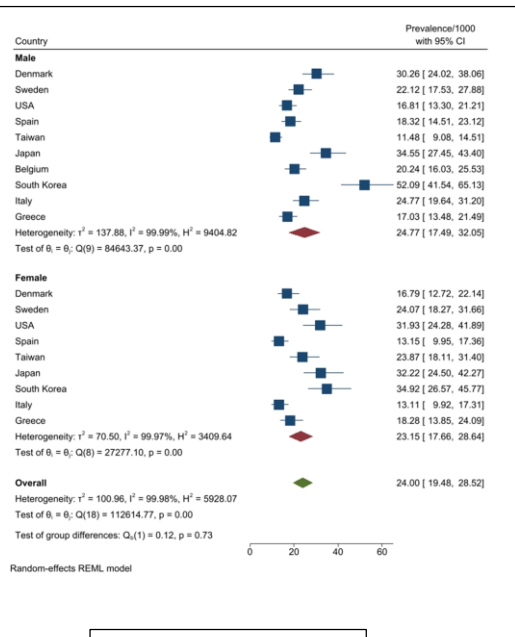
(a) 65-69



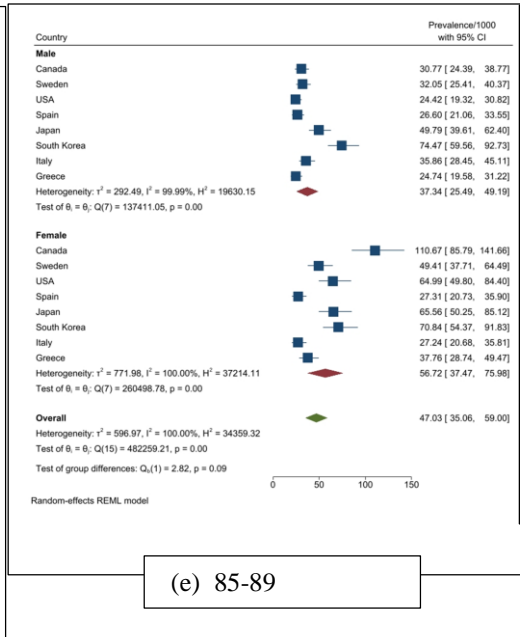
(b) 70-74



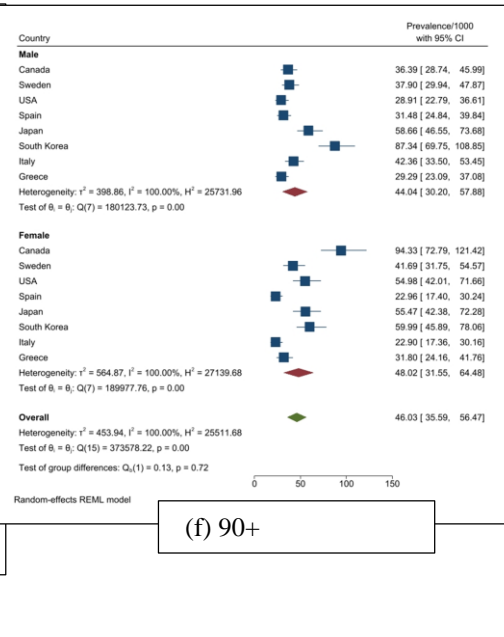
(c) 75-79



(d) 80-84

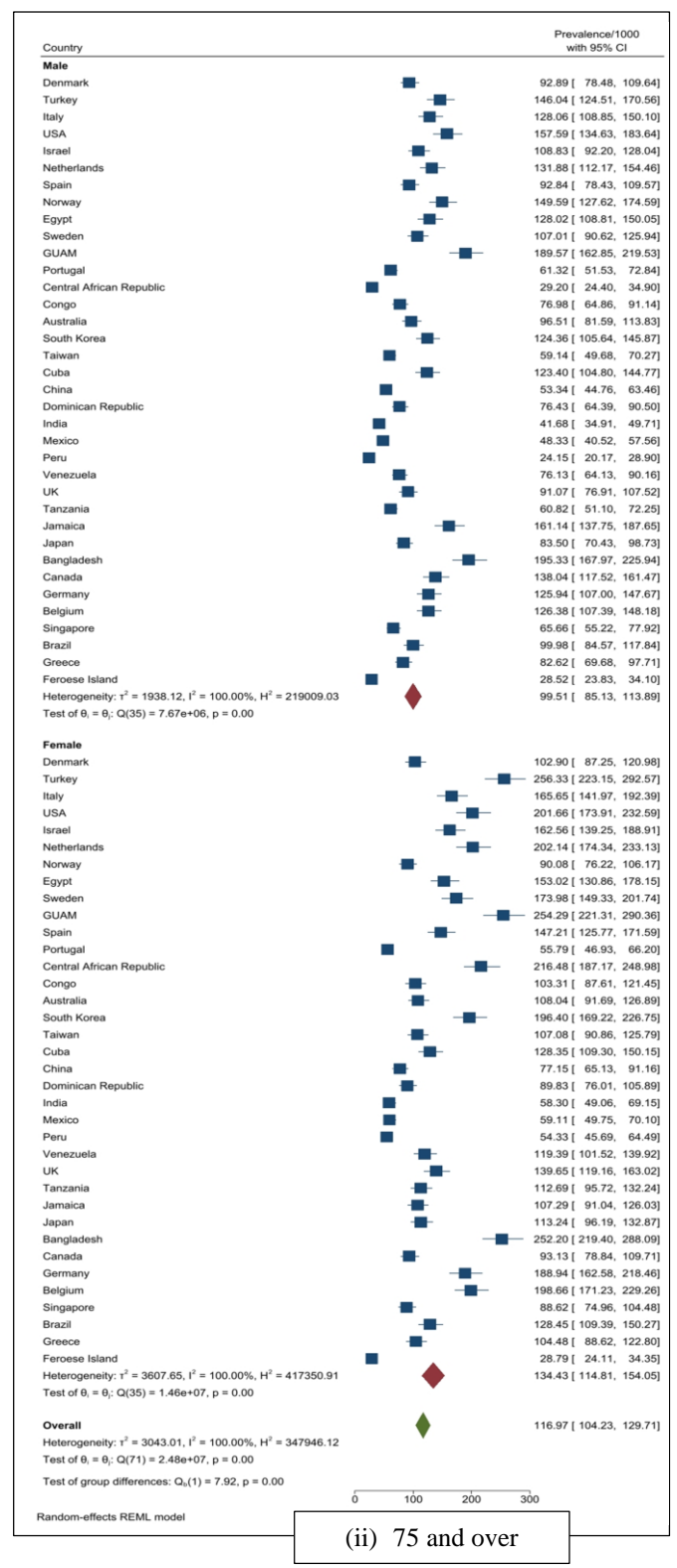
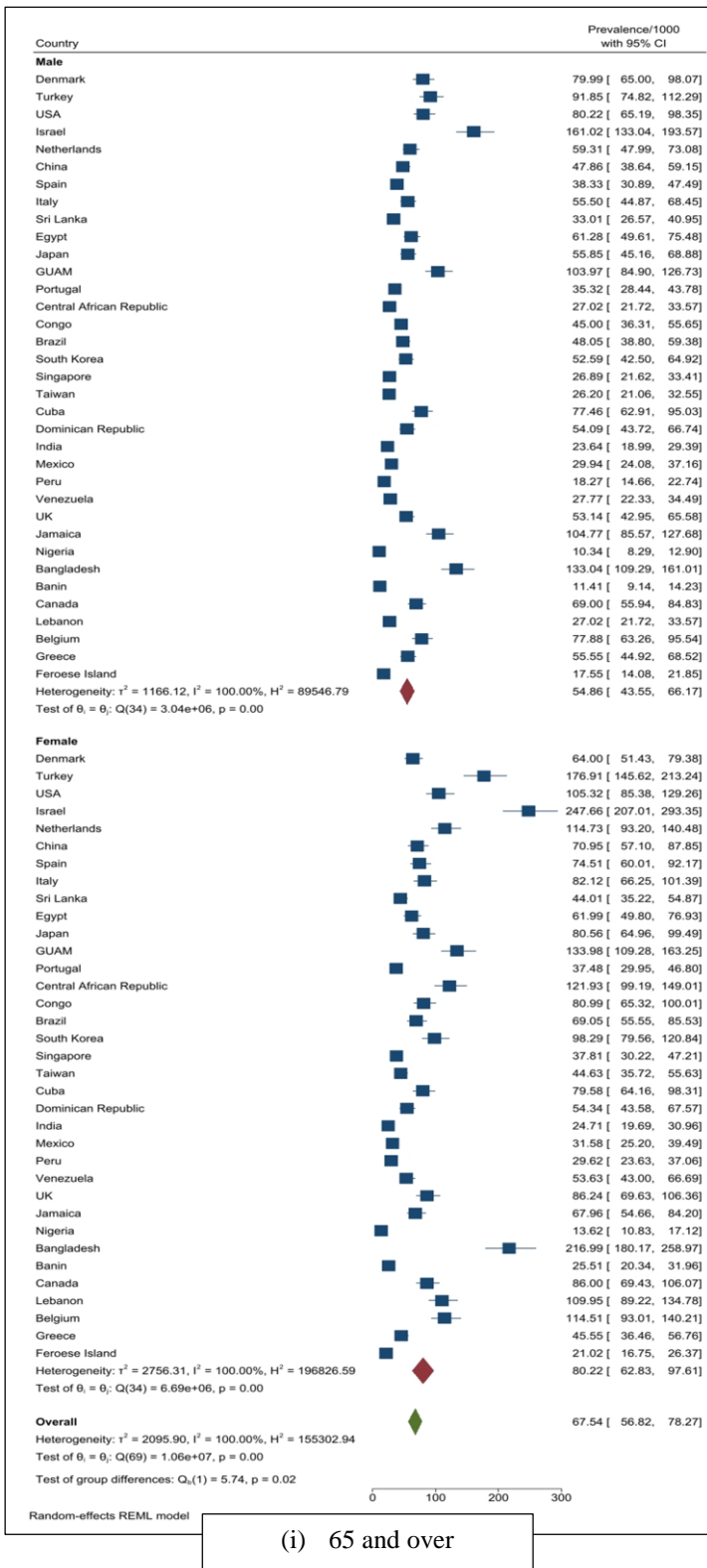


(e) 85-89

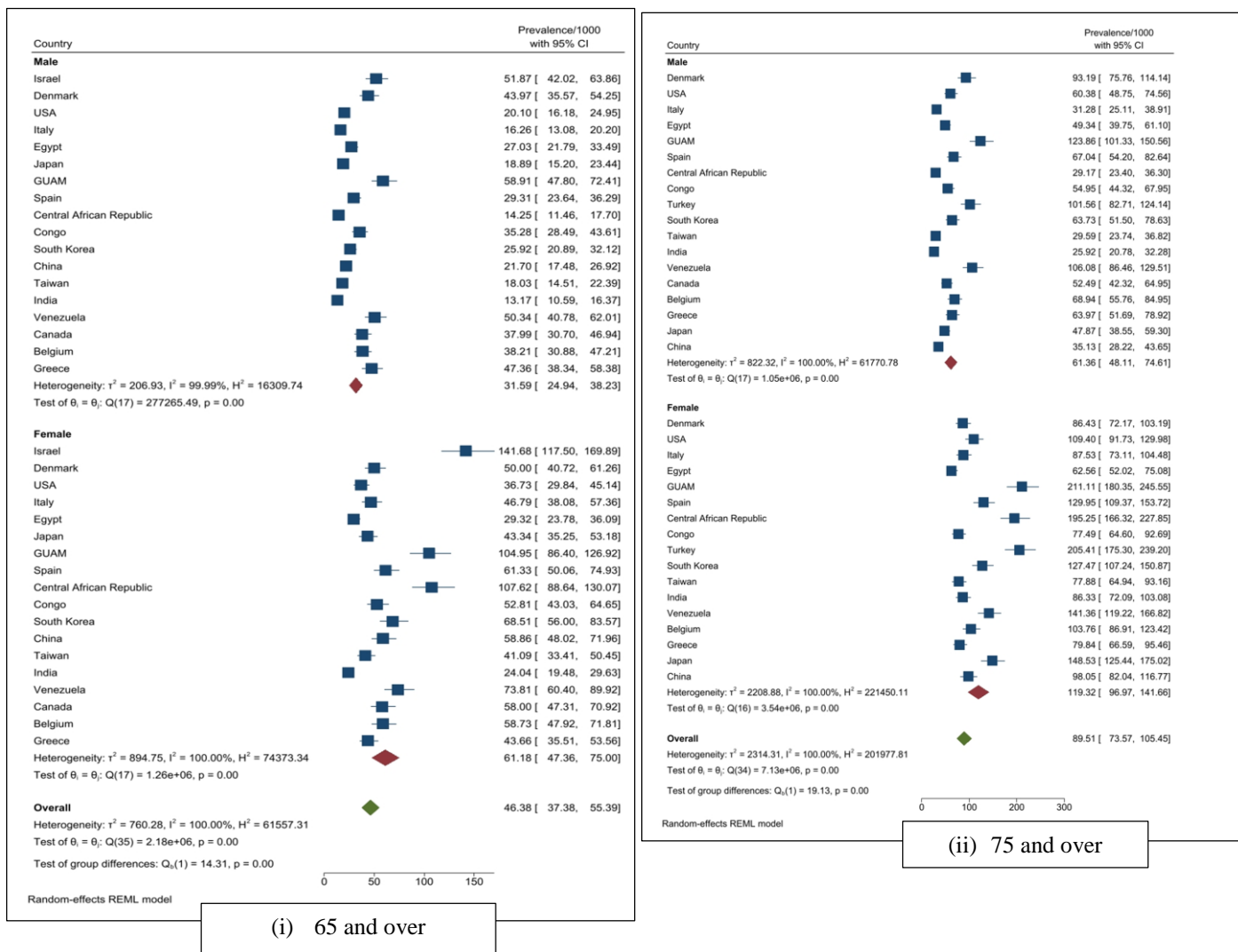


(f) 90+

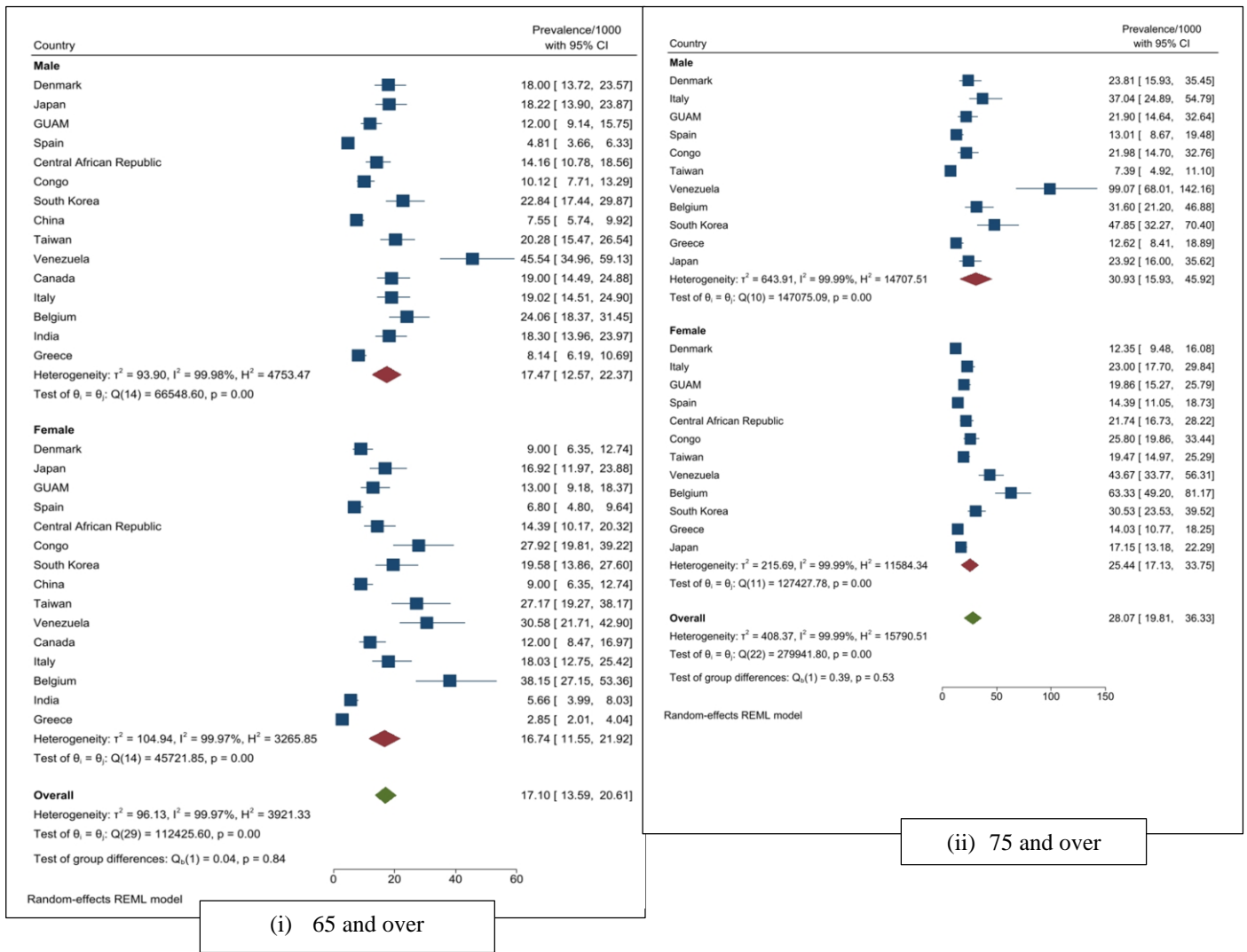
Supplementary Figure 6. Country specific prevalence of VaD/1000 people for men and women at age (a) 65-69 (b) 70-74 (c) 75-79 (d) 80-84 (e) 85-89 and (f) 90 and over



Supplementary Figure 7. Country specific prevalence of Any dementia/1000 people for men and women among (i) 65 and over and (ii) 75 and older



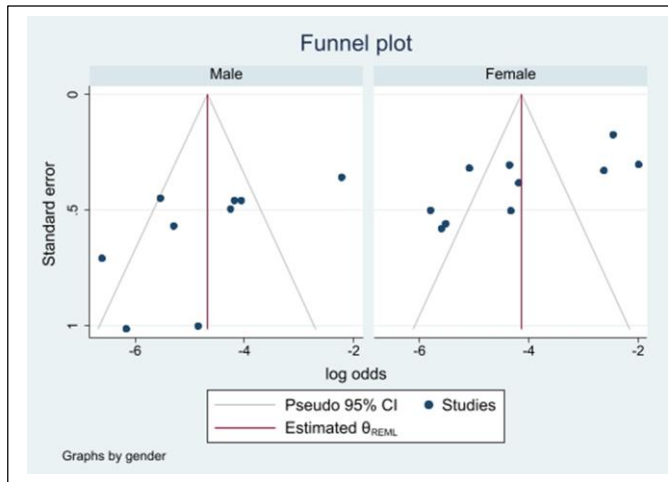
Supplementary Figure 8. Country specific prevalence of AD/1000 people for men and women among (i) 65 and over and (ii) 75 and older



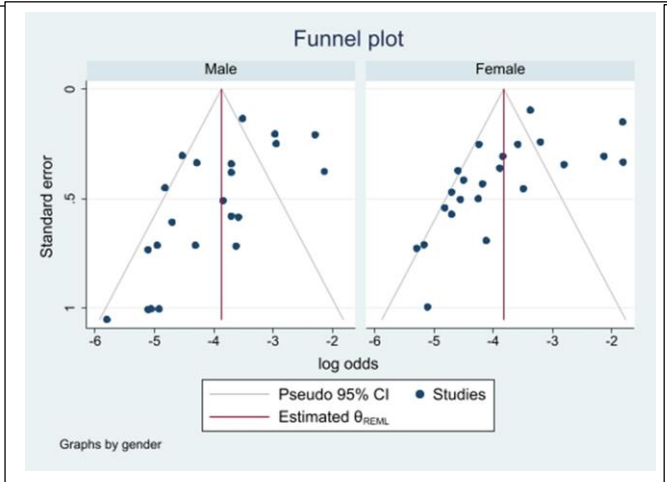
Supplementary Figure 9. Country specific prevalence of VaD/1000 people for men and women among (i) 65 and over and (ii) 75 and older

Supplementary Table 1. Hierarchical meta regression analysis to find the 2016 country specific risk factors (mediators) associated with age specific dementia incidence/prevalence (all models are adjusted for age)

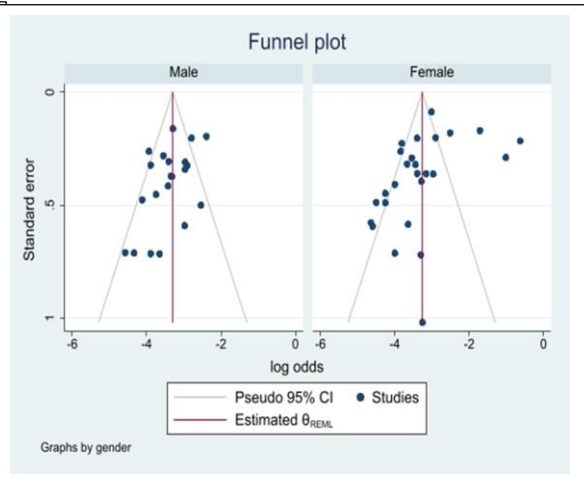
	Covariates	Incidence		Prevalence	
		B (95% CI)	p-value	B (95% CI)	p-value
Model 1	Female	0.14 (-0.07, 0.34)	0.20	0.28 (0.12, 0.43)	<0.01
Model 2	Female	1.03 (0.75, 1.31)	<0.001	0.58 (0.29, 0.86)	<0.001
	Life expectancy at age 65	-0.29 (-0.36, -0.22)	<0.001	-0.08 (-0.16, -0.01)	0.03
Model 3	Female	0.13 (-0.04, 0.31)	0.14	0.28 (0.12, 0.43)	<0.01
	Gender development index (GDI)	-5.61 (-7.17, -4.06)	<0.001	-0.64 (-1.39, 0.11)	0.10
Model 4	Female	0.13 (-0.01, 0.27)	0.08	0.28 (0.12, 0.43)	<0.001
	Gender Inequality (GII)	5.37 (4.50, 6.24)	<0.001	0.73 (0.26, 1.20)	<0.01
Model 5	Female	0.16 (-0.06, 0.38)	0.15	0.35 (0.18, 0.52)	<0.001
	Years in Education	-0.11 (-0.18, -0.03)	<0.01	-0.07 (-0.13, -0.01)	0.03
Model 6	Female	0.14 (-0.07, 0.34)	0.20	0.28 (0.13, 0.43)	<0.001
	Unemployment ratio female to male	-0.33 (-0.89, 0.24)	0.26	0.44 (0.26, 0.61)	<0.001
Model 7	Female	-0.70 (-3.88, 2.48)	0.67	-1.15 (-4.21, 1.90)	0.46
	Life expectancy at age 65	-0.35 (-0.49, -0.21)	<0.001	-0.14 (-0.27, -0.02)	0.03
	Sex*Life expectancy at age 65	0.09 (-0.07, 0.25)	0.28	0.09 (-0.07, 0.24)	0.26
Model 8	Female	1.28 (-1.33, 3.89)	0.34	2.67 (0.52, 4.83)	0.02
	Years in Education	-0.08 (-0.18, 0.03)	0.16	-0.00 (-0.09, 0.08)	0.96
	Sex*Education	-0.06 (-0.21, 0.08)	0.40	-0.13 (-0.25, -0.01)	0.03



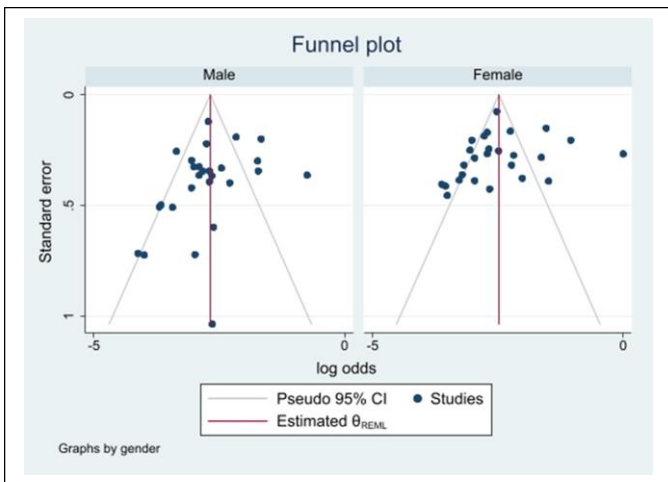
(a) 60-64



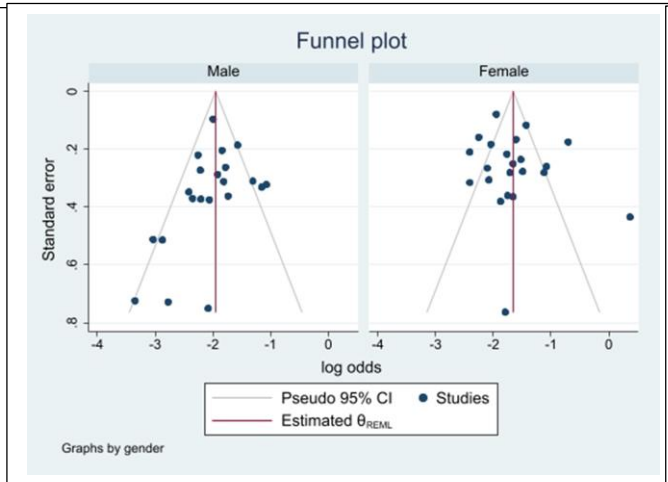
(b) 65-69



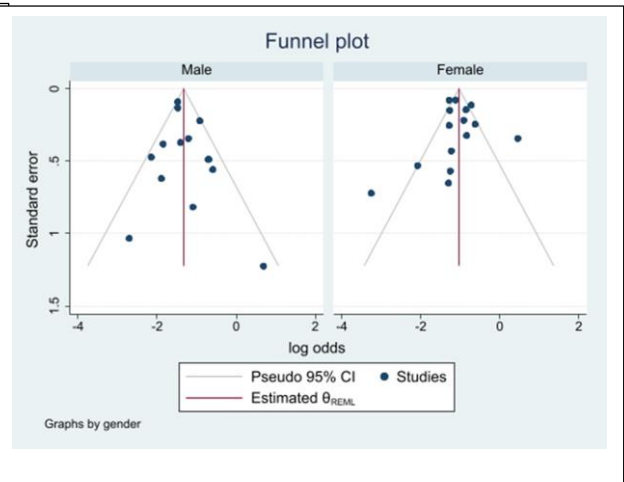
(c) 70-74



(d) 75-79

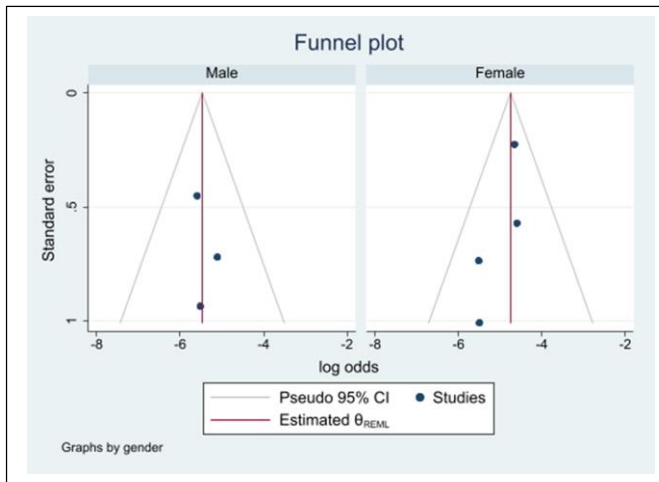


(e) 80-84

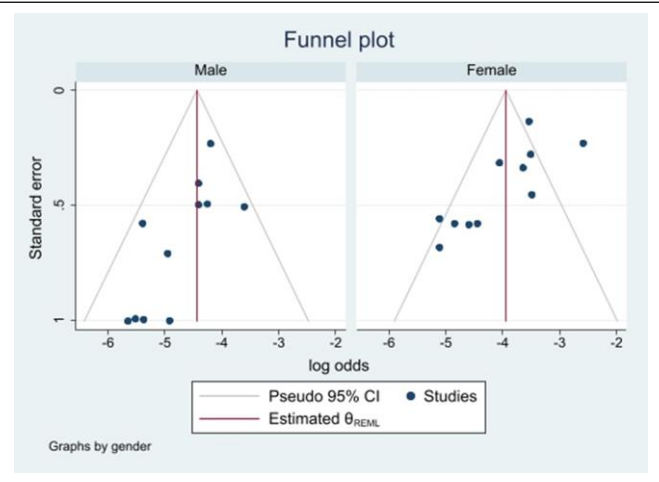


(f) 85-89

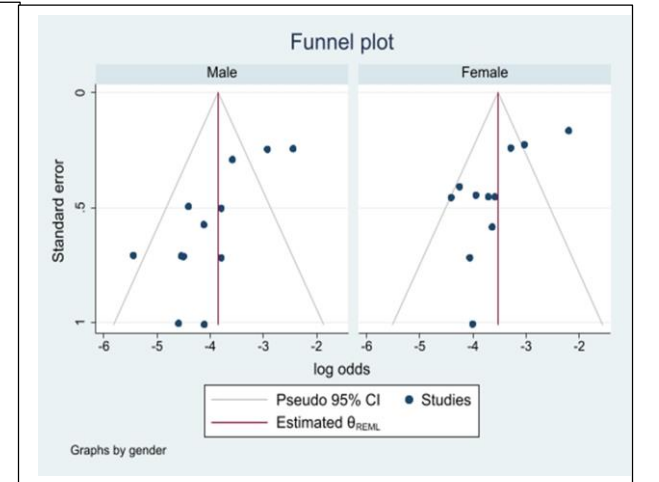
Supplementary Figure 10. Funnel plot for country specific prevalence of Any dementia for men and women at age (a) 60-64 (b) 65-69 (c) 70-74 (d) 75-79 (e) 80-84 and (f) 85-89



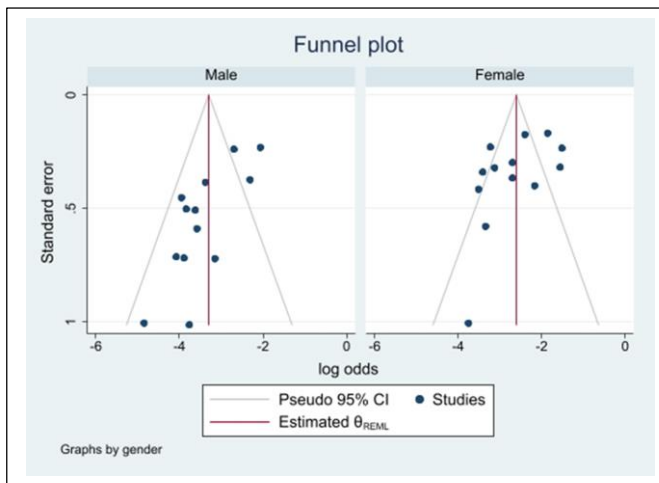
(a) 60-64



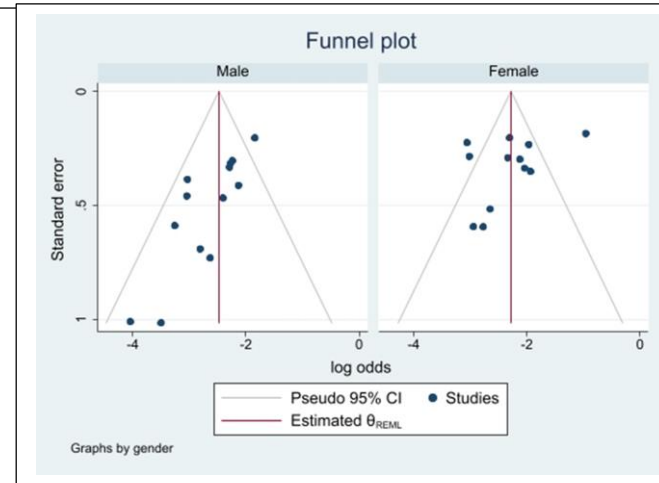
(b) 65-69



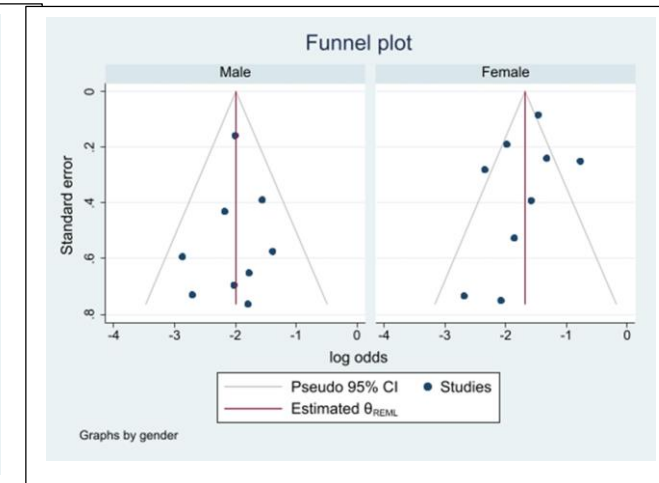
(c) 70-74



(d) 75-79

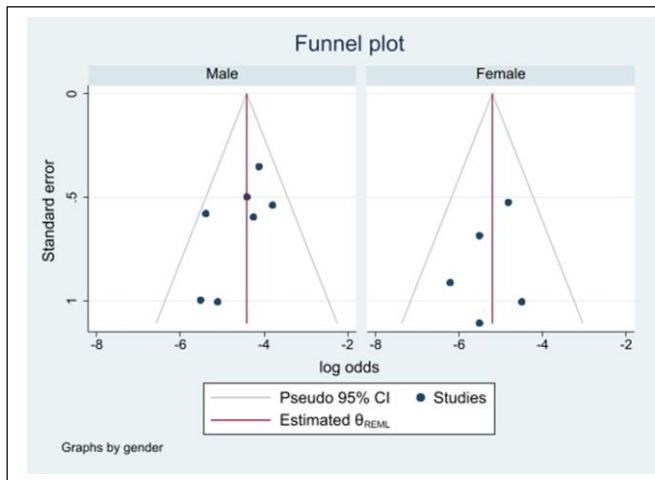


(e) 80-84

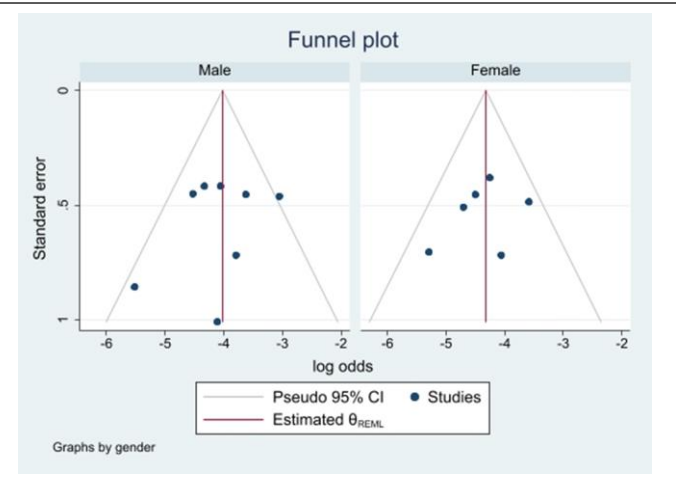


(f) 85-89

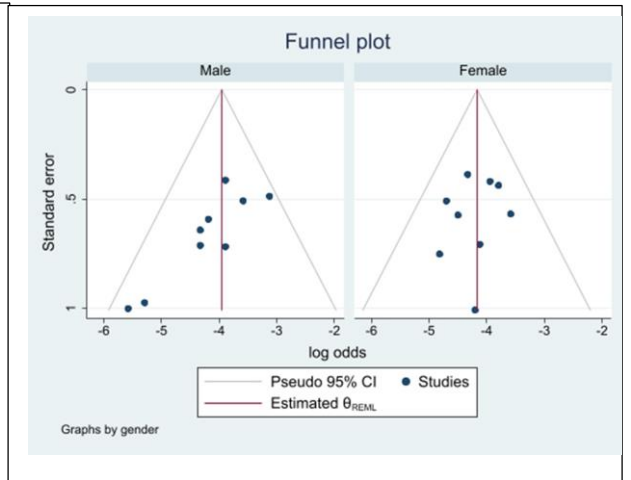
Supplementary Figure 11. Funnel plot for country specific prevalence of AD for men and women at age (a) 60-64 (b) 65-69 (c) 70-74 (d) 75-79 (e) 80-84 and (f) 85-89



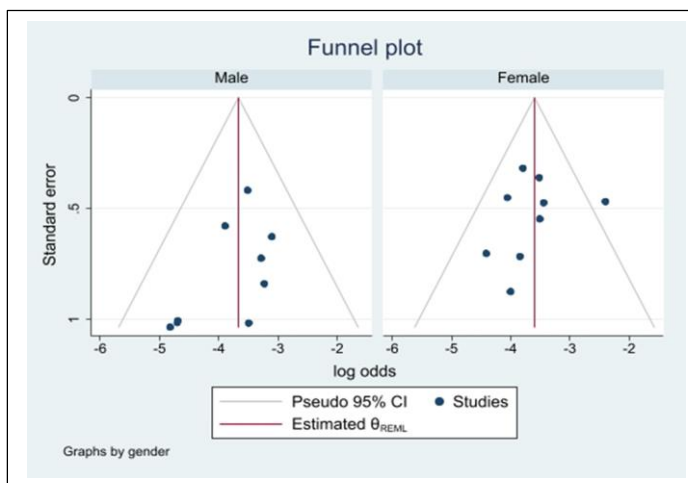
(a) 65-69



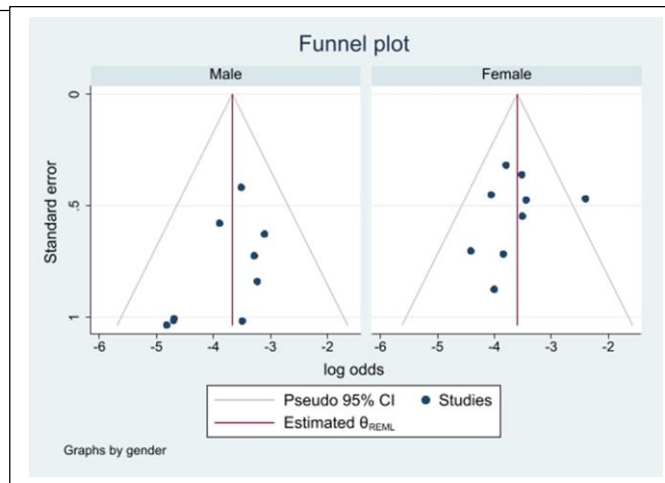
(b) 70-74



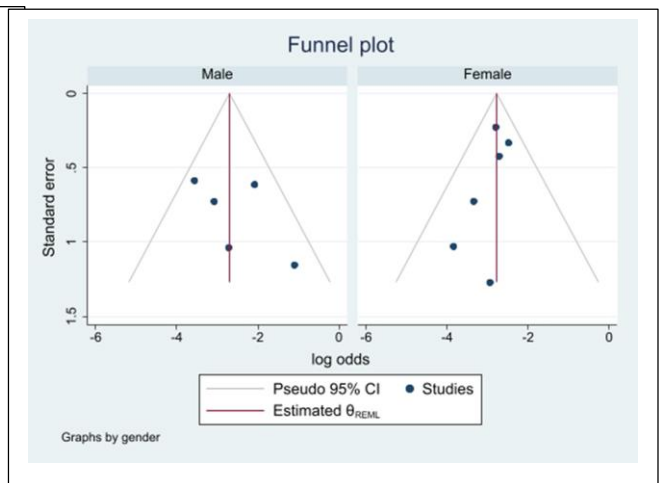
(c) 75-79



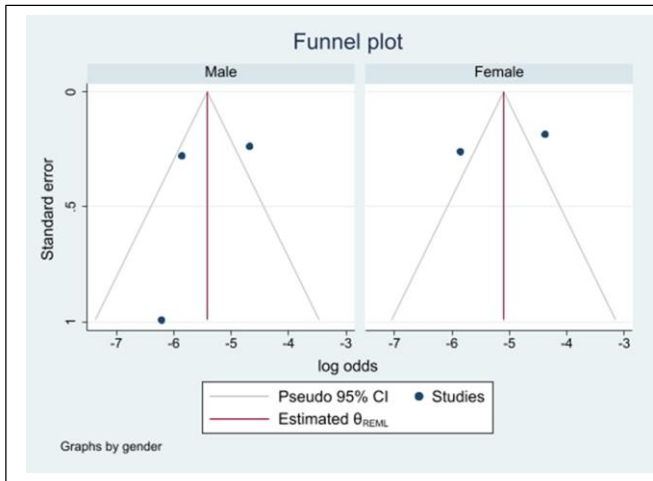
(d) 80-84



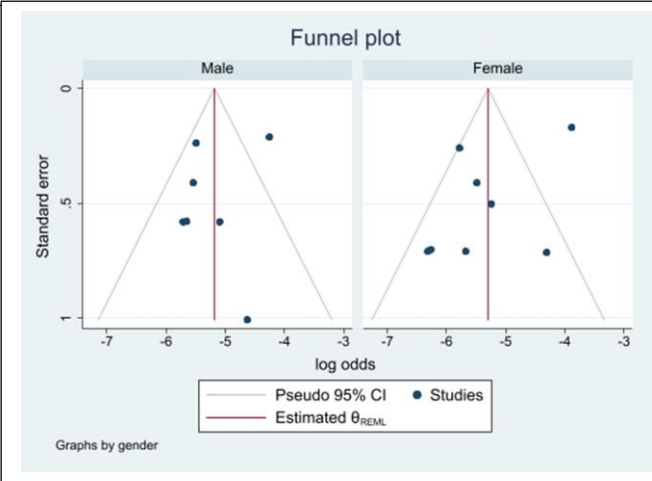
(e) 85-89



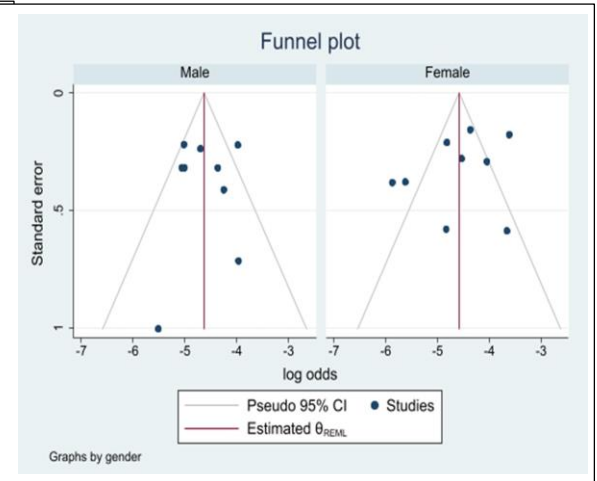
(f) 90+



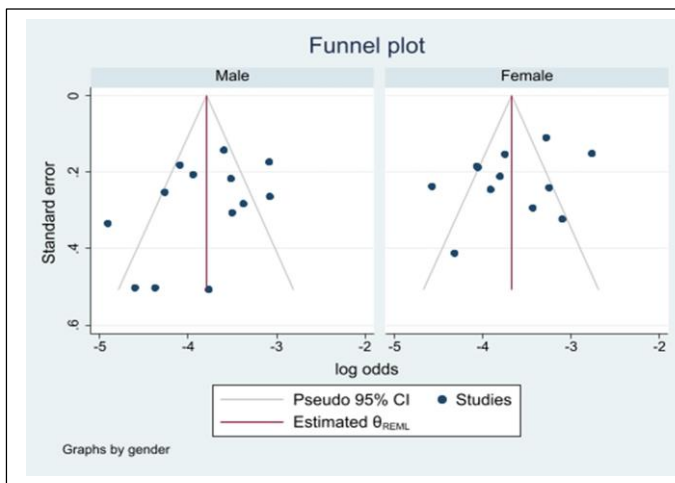
(a) 60-64



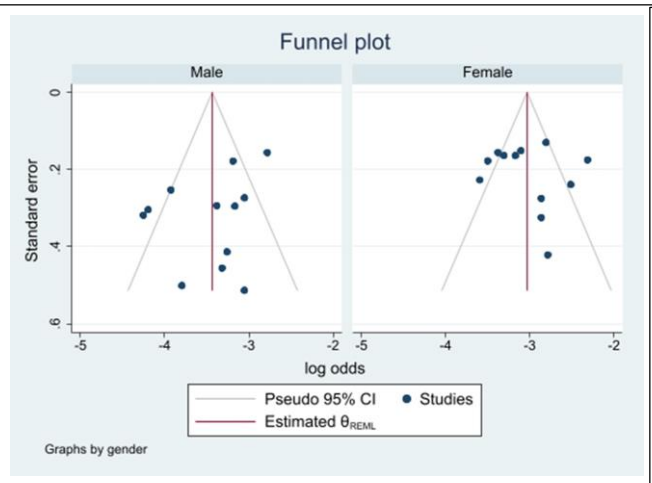
(b) 65-69



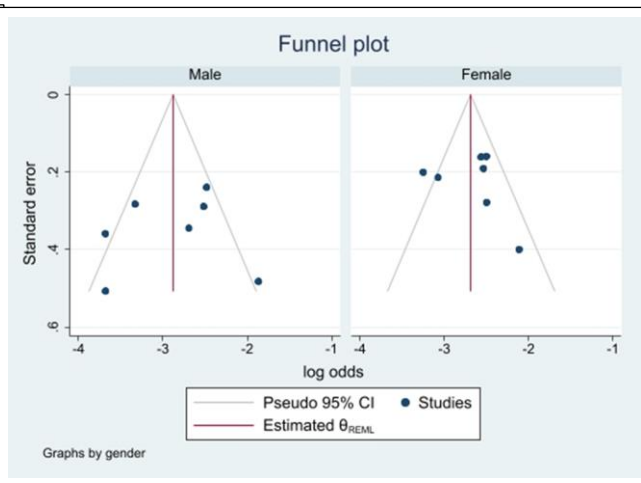
(c) 70-74



(d) 75-79

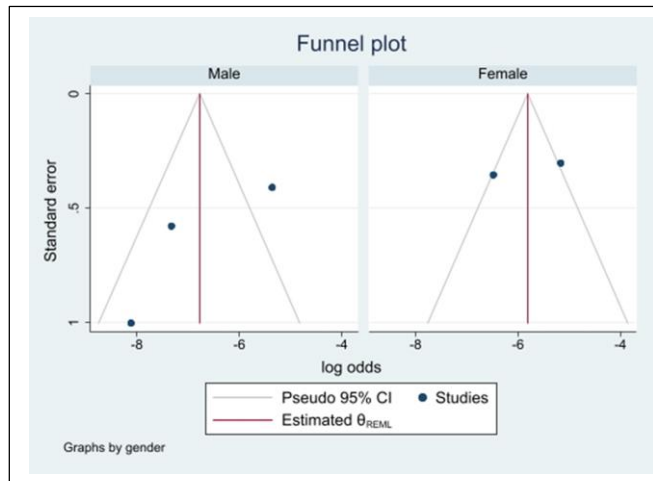


(e) 80-84

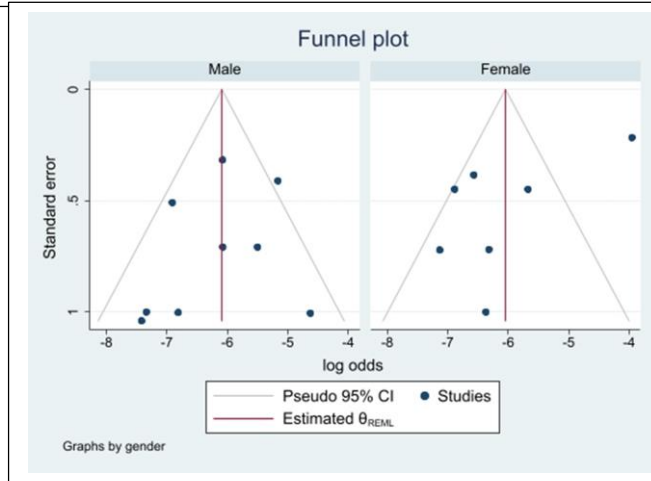


(f) 85-89

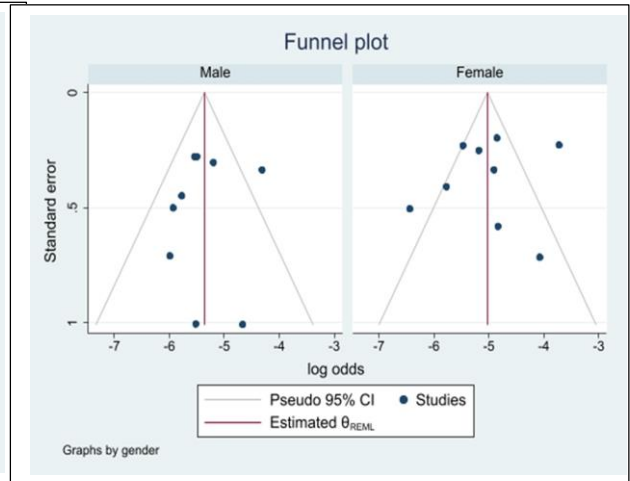
Supplementary Figure 13. Funnel plot for country specific incidence of Any dementia for men and women at age (a) 60-64 (b) 65-69 (c) 70-74 (d) 75-79 (e) 80-84 and (f) 85-89



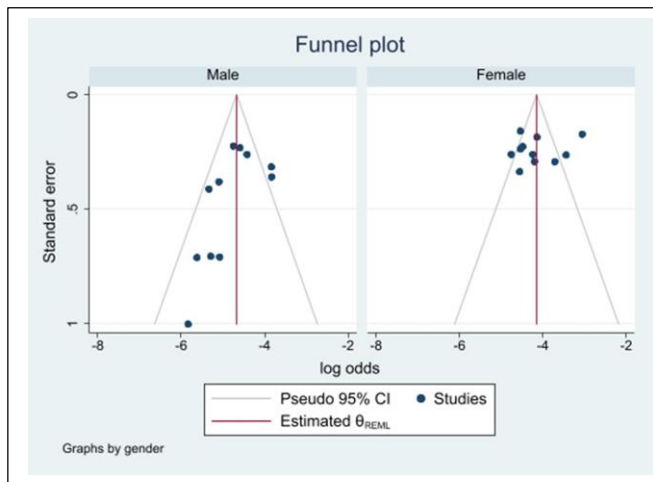
(a) 60-64



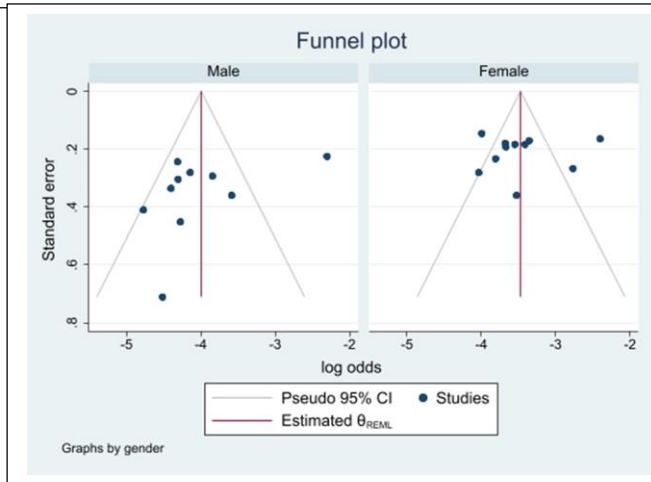
(b) 65-69



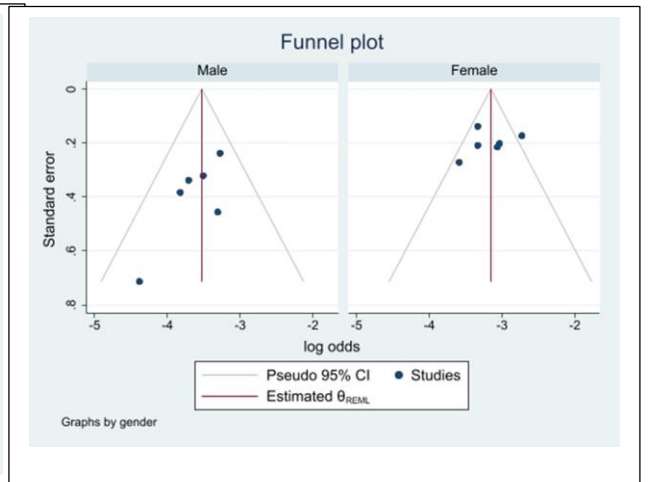
(c) 70-74



(d) 75-79

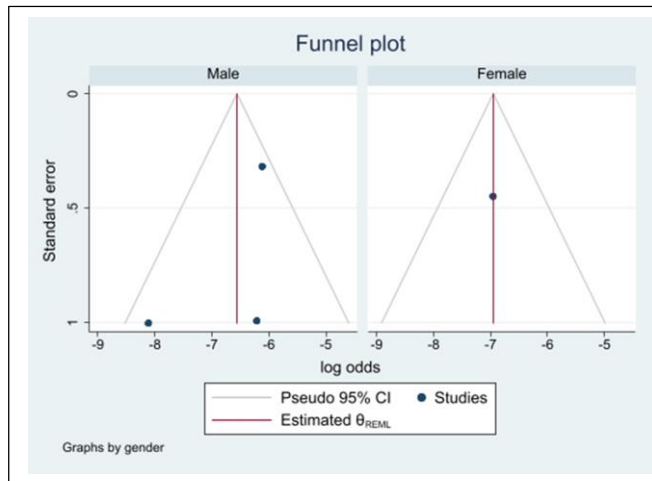


(e) 80-84

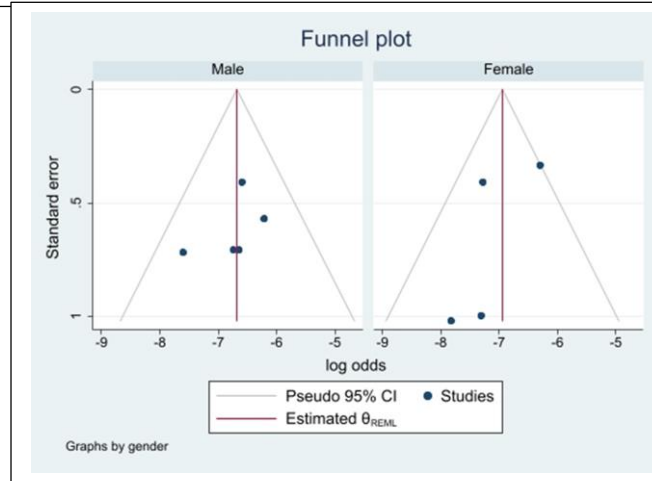


(f) 85-89

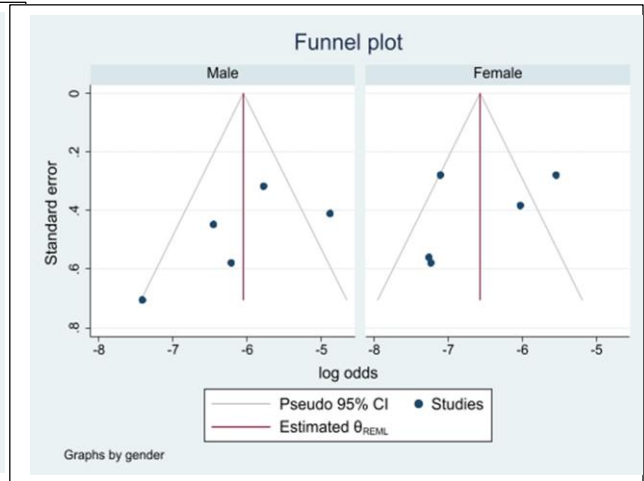
Supplementary Figure 14. Funnel plot for country specific incidence of AD for men and women at age (a) 60-64 (b) 65-69 (c) 70-74 (d) 75-79 (e) 80-84 and (f) 85-89



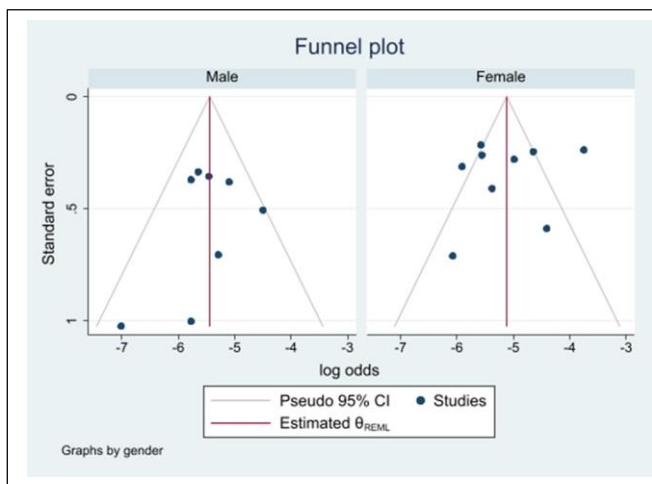
(a) 60-64



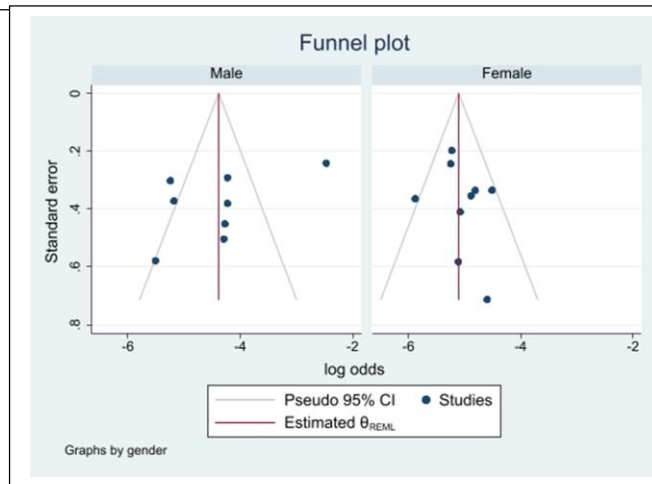
(b) 65-69



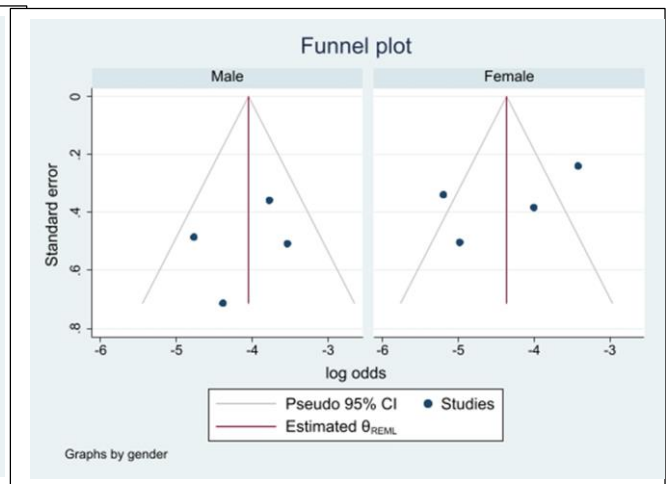
(c) 70-74



(d) 75-79



(e) 80-84



(f) 85-89

Supplementary Figure 15. Funnel plot for country specific incidence of VaD for men and women at age (a) 60-64 (b) 65-69 (c) 70-74 (d) 75-79 (e) 80-84 and (f) 85-89