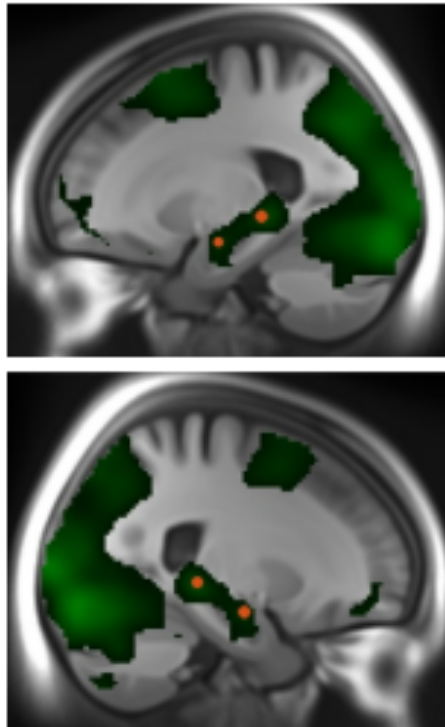


Supplementary Material

Association of *APOE* ϵ 4 and Plasma p-tau181 with Preclinical Alzheimer's Disease and Longitudinal Change in Hippocampus Function



Supplementary Figure 1. Hippocampus regions of interest (red) shown on the task activation map (green; encoding versus baseline), $p < 0.05$, Family-wise error correction (FWE)-corrected