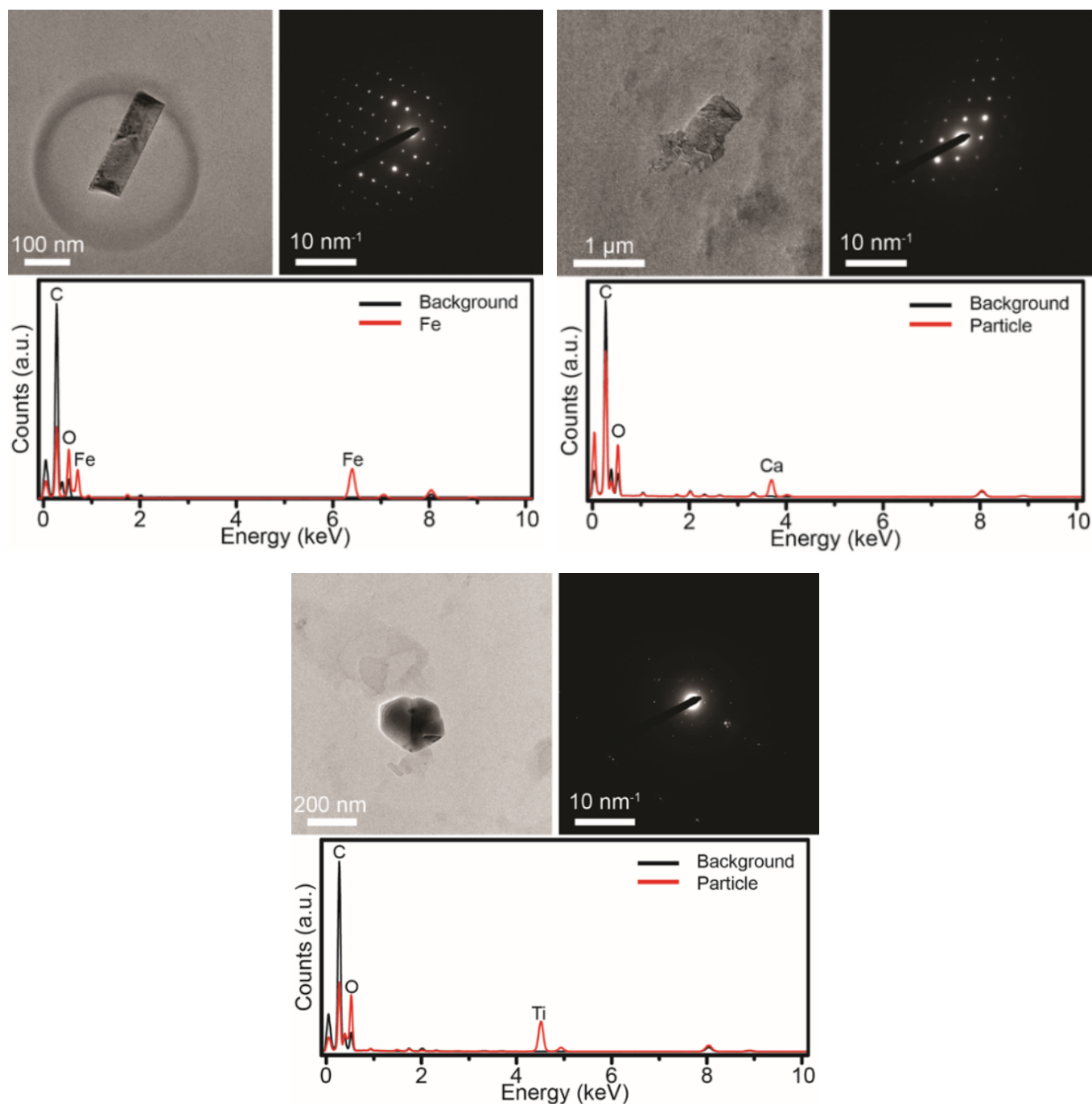


Supplementary Material

Potentially Pathogenic Calcium Oxalate Dihydrate and Titanium Dioxide Crystals in the Alzheimer's Disease Entorhinal Cortex



Supplementary Figure 1. TEM image and corresponding SAED pattern and EDS spectrum of an Fe(O)OH particle of specimen 1202 (top, left); of a dehydrated and electron beam decomposed Ca²⁺ oxalate dihydrate particle of specimen 0275 (top, right); and of a TiO₂ particle in specimen 3273 (bottom). The EDS background was measured near the crystals.