

Supplementary Data

Lost and Forgotten? Orientation Versus Memory in Alzheimer's Disease and Frontotemporal Dementia

Belinda Yew^a, Suvarna Alladi^d, Mekala Shailaja^d, John R. Hodges^{a,b,c} and Michael Hornberger^{a,b,c,*}

^a*Neuroscience Research Australia, Sydney, Australia*

^b*Faculty of Medicine, University of New South Wales, Sydney, NSW, Australia*

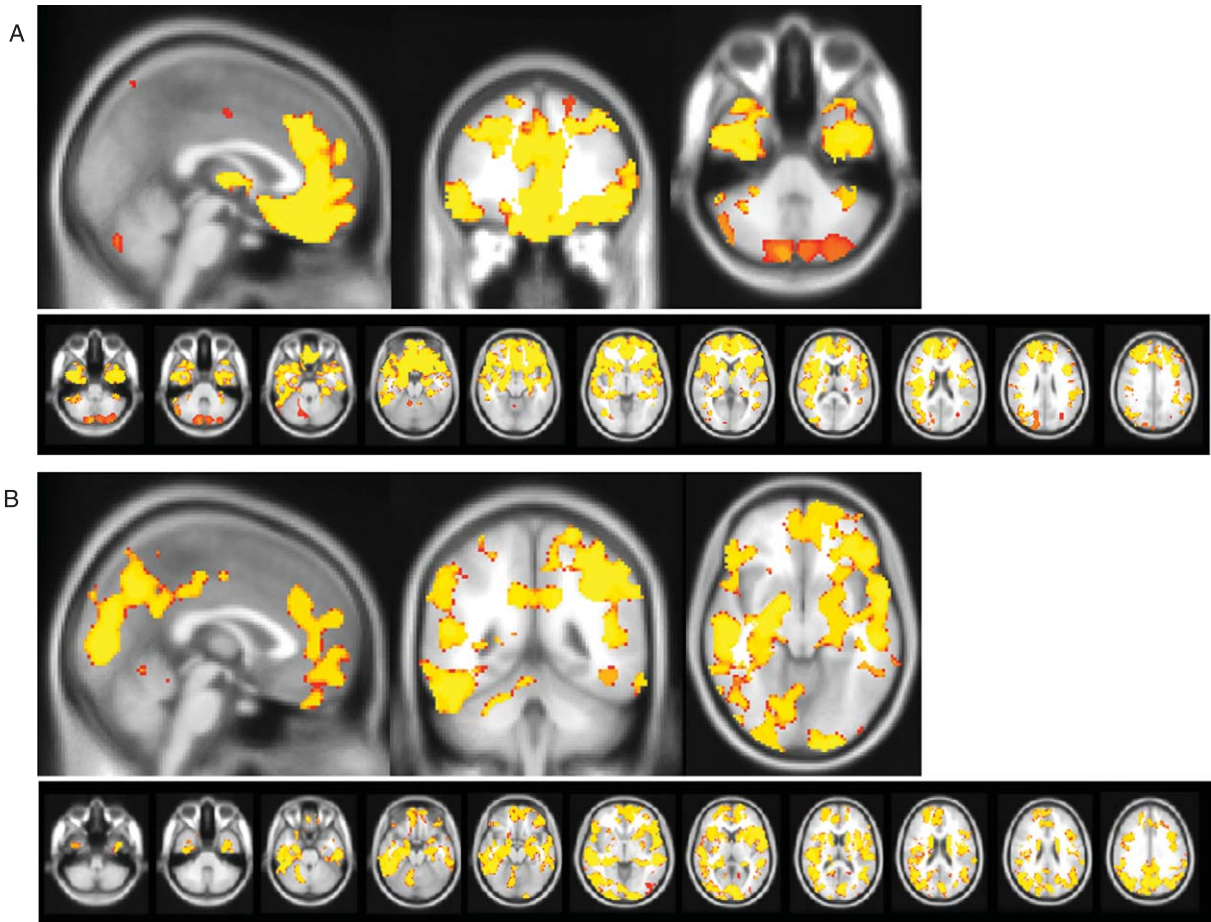
^c*ARC Centre of Excellence in Cognition and its Disorders, Sydney, NSW, Australia*

^d*Department of Neurology, Nizam's Institute of Medical Sciences, Hyderabad, India*

Handling Associate Editor: Paulo Caramelli

Accepted 9 August 2012

*Correspondence to: Dr. Michael Hornberger, Neuroscience Research Australia, Sydney, Randwick, NSW 2031, Australia. Tel.: +61 2 9399 1816; E-mail: m.hornberger@neura.edu.au.



Supplementary Figure 1. Brain atrophy patients compared to controls. Voxel-based morphometry analyses showing grey matter atrophy for a) bvFTD versus controls and b) AD versus controls. Clusters are overlaid on the MNI standard brain ($t > 2.41$). Colored voxels show regions that were significant in the analyses for $p < 0.05$ family-wise error corrected.