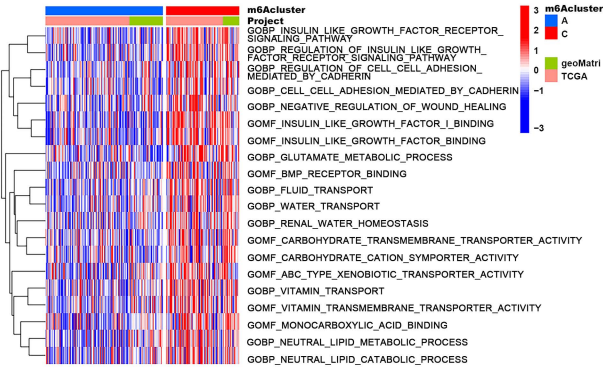
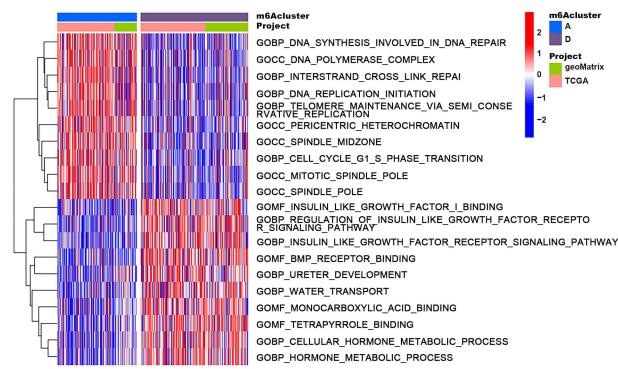


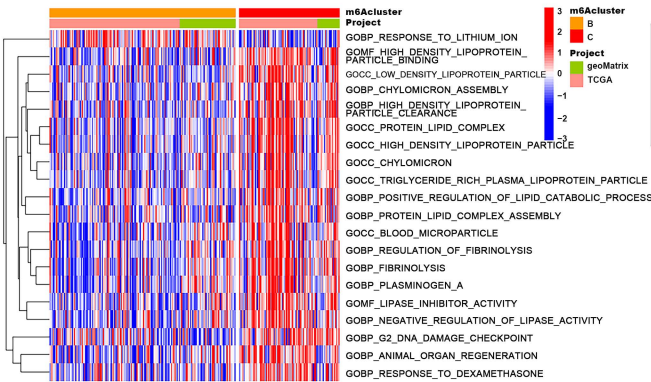
A



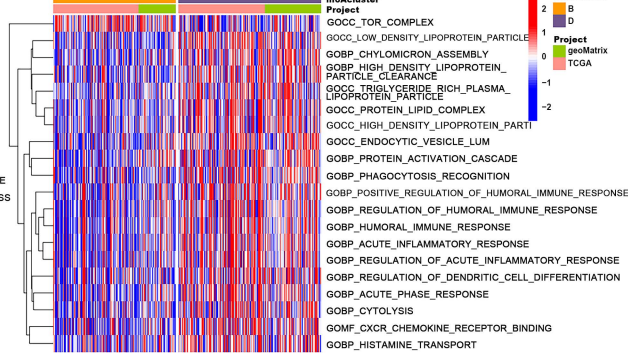
B



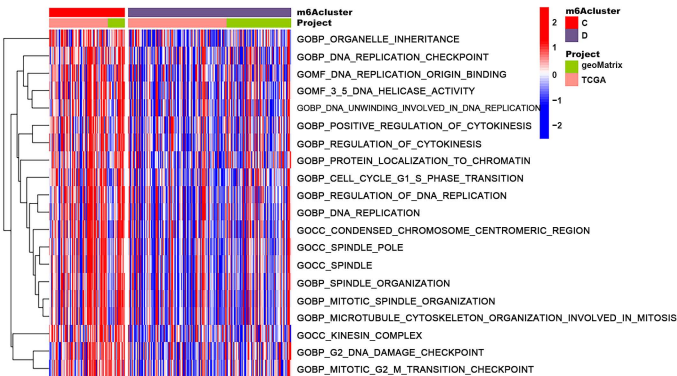
C

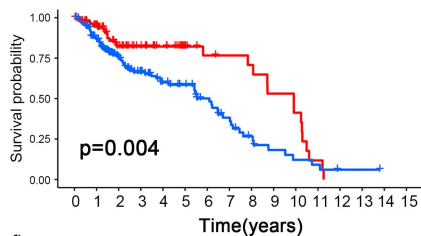
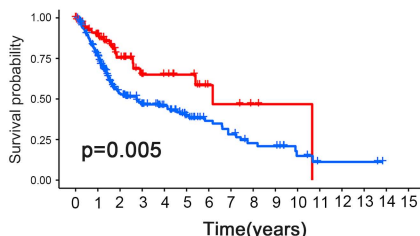
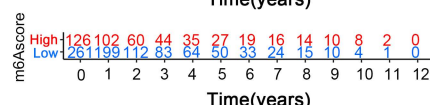
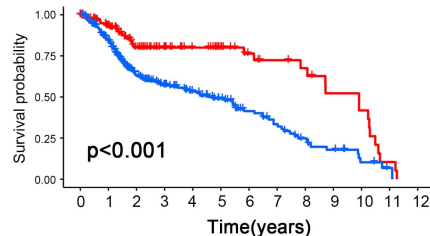
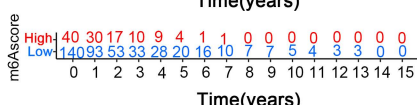
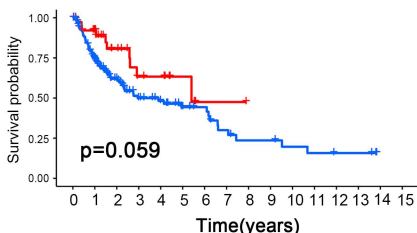
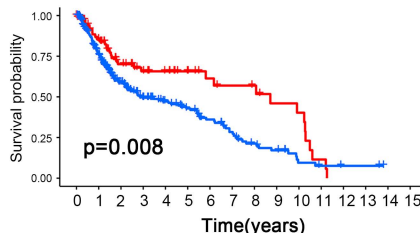
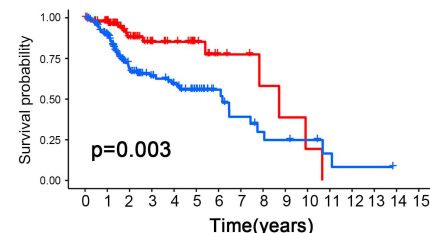
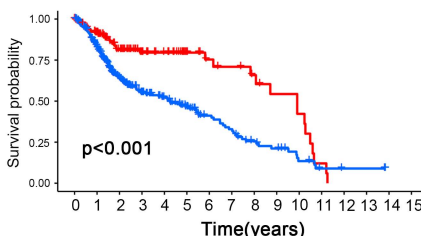
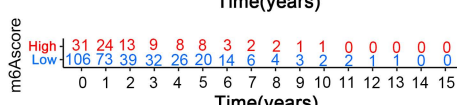
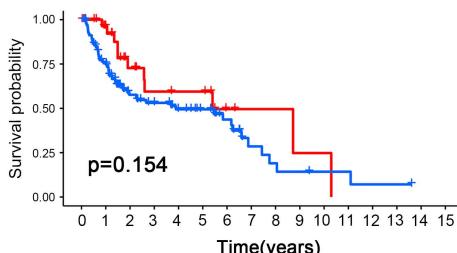


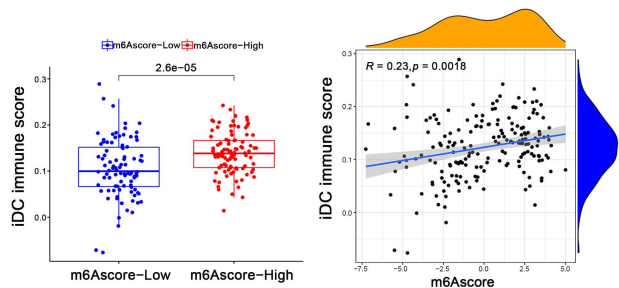
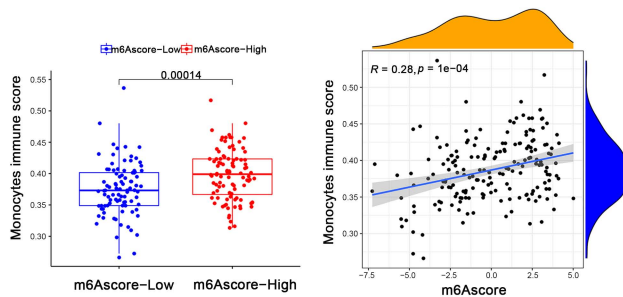
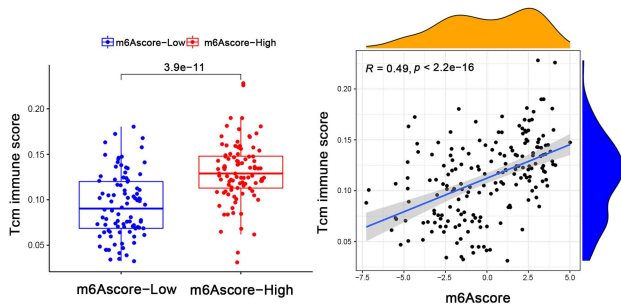
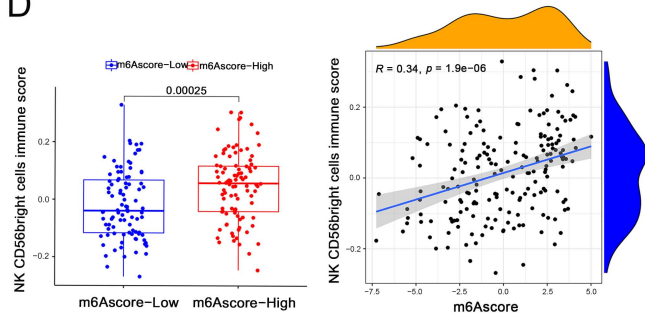
D



E



A**Patients with Ta-T2**m6Ascore ▲ High ▲ Low**B****Patients with T3-T4**m6Ascore ▲ High ▲ Low**C****Patients with N0**m6Ascore ▲ High ▲ Low**D****Patients with N1-X**m6Ascore ▲ High ▲ Low**E****Patients with age>65**m6Ascore ▲ High ▲ Low**F****Patients with age<=65**m6Ascore ▲ High ▲ Low**G****Patients with male**m6Ascore ▲ High ▲ Low**H****Patients with female**m6Ascore ▲ High ▲ Low

A**B****C****D**

Supplementary Table 1. Clinicopathologic characteristics of TCGA patients

Project	Subtype	Frequency	Percentage(%)	Cumulative percentage(%)
Age	<=65	179	39.43	39.43
	>65	275	60.57	100
Gender	female	124	27.31	27.31
	male	330	72.69	100
Stage_T	T0	1	0.22	0.22
	T1	4	0.88	1.1
	T2	40	8.81	9.91
	T2a	27	5.95	15.86
	T2b	61	13.44	29.3
	T3	48	10.57	39.87
	T3a	86	18.94	58.81
	T3b	86	18.94	77.75
	T4	13	2.86	80.62
	T4a	50	11.01	91.63
	T4b	5	1.1	92.73
	TX	1	0.22	92.95
	unknown	32	7.05	100
	Stage_N	N0	264	58.15
N1		55	12.11	70.26
N2		84	18.5	88.77
N3		8	1.76	90.53
NX		37	8.15	98.68
unknown		6	1.32	100
Stage_M	M0	220	48.46	48.46
	M1	11	2.42	50.88
	MX	220	48.46	99.34
	unknown	3	0.66	100
Grade	High Grade	429	94.49	94.49
	Low Grade	21	4.63	99.12
	unknown	4	0.88	100
Total		454	100	100

Supplementary Table 2. Clinicopathologic characteristics of GEO patients

Project	Subtype	Frequency	Percentage(%)	Cumulative percentage(%)
Biological source	Primary bladder cancer	165	87.77	87.77
	Recurrent non-muscle invasive tumor	23	12.23	100
Age	<=65	74	39.36	39.36
	>65	91	48.4	87.77
Gender	unknown	23	12.23	100
	female	30	15.96	15.96
	male	135	71.81	87.77
Invasiveness	unknown	23	12.23	100
	muscle invasive	62	32.98	32.98
	non-muscle invasive	103	54.79	87.77
Treatment	unknown	23	12.23	100
	intravesical therapy: No	47	25	25
	intravesical therapy: Yes	56	29.79	54.79
	systemic chemo: No	36	19.15	73.94
	systemic chemo: Yes	26	13.83	87.77
Stage_T	unknown	23	12.23	100
	T1	80	42.55	42.55
	T2	31	16.49	59.04
	T3	19	10.11	69.15
	T4	11	5.85	75
	Ta	24	12.77	87.77
Stage_N	unknown	23	12.23	100
	N0	149	79.26	79.26
	N1	8	4.26	83.51
	N2	6	3.19	86.7
	N3	1	0.53	87.23
Stage_M	NX	1	0.53	87.77
	unknown	23	12.23	100
	M0	158	84.04	84.04
	M1	7	3.72	87.77
Grade	unknown	23	12.23	100
	high	60	31.91	31.91
	low	105	55.85	87.77
Progression	unknown	23	12.23	100
	No	134	71.28	71.28
Overall survival	Yes	31	16.49	87.77
	unknown	23	12.23	100
	death	69	36.7	36.7
Cancer specific survival	survival	96	51.06	87.77
	unknown	23	12.23	100
	death	32	17.02	17.02
	survival	133	70.74	87.77
	unknown	23	12.23	100
Total		188	100	100